

14/31 Belmont Avenue, Wollstonecraft, NSW 2065



Apartment For Rent

Tuesday, 2 July 2024

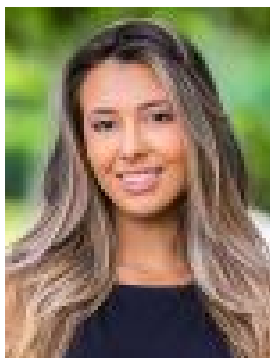
14/31 Belmont Avenue, Wollstonecraft, NSW 2065

Bedrooms: 1

Bathrooms: 1

Parkings: 1

Type: Apartment



Felicia Mezei
0418186077

\$730 pw

Presenting an expansive 80-square-meter living space, this generously proportioned apartment has been skillfully designed to embrace the warmth of northern sunlight, spacious interiors, and a peaceful, leafy environment. It is situated in a prestigious location, offering a diverse range of lifestyle amenities in close proximity.- Enhancing its privacy within a tranquil rear setting- Inviting foyer guides into the bright, open-plan lounge and dining area- Sun-drenched terrace, perfect for outdoor gatherings- CaesarStone kitchen, modern appliances, a Bosch dishwasher- Bedroom features a walk-in robe, looking onto private leafy vistas- Stylish designer bathroom, separate internal laundry area- Underfloor heating, air conditioning, and expansive picture windows- Secure undercover parking space and a security intercom system- Dual street access, with a private walkway entrance via Newlands Lane- Walking distance to vibrant cafes, Wollstonecraft Station, and parklands