

**14B/100 Elizabeth Bay Road, Elizabeth Bay, NSW,
2011**



Apartment For Sale

Sunday, 8 September 2024

14B/100 Elizabeth Bay Road, Elizabeth Bay, NSW, 2011

Bedrooms: 1

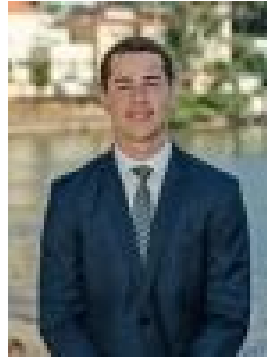
Bathrooms: 1

Parkings: 1

Type: Apartment



Jordan LEstrange
0425407560



Hamish Lindstrom
0451244994

Studio Apartment Creates Excellent lifestyle Or Investment Opportunity

Positioned on The Loop in an iconic building designed by Harry Seidler, this International Lodge studio apartment offers and unmissable lifestyle opportunity in the peaceful pocket of Elizabeth Bay. Perfect for those seeking a low maintenance retreat, with north facing, generous combined living and accommodation zones, a large sun washed balcony enjoying gorgeous harbour views, plus an oversized lock-up garage with spacious loft storage area. Situated in B block with direct access to The Esplanade, Beare Park and Marina, the property's address provides effortless access to Harbourside parks, famous eateries and city transport.

- Studio, 1 bathroom, 1 parking
- Practical layout delivers comfort and privacy
- Crisp white interiors enjoy plenty of sunlight
- Electric kitchen offers stone crafted benches
- Built-in mirrored wardrobes, internal laundry
- Automated lock-up garage with spacious loft storage area
- Common swimming pool and barbecue area
- Views of Harbour Bridge from rooftop terrace

Ray White Double Bay - The Team of Professionals You Deserve

Our recommended loan broker <https://broker.loanmarket.com.au/DOUBLE-BAY>