

150/22-32 Great Western Highway, Parramatta, NSW 2150



Apartment For Sale

Sunday, 30 June 2024

150/22-32 Great Western Highway, Parramatta, NSW 2150

Bedrooms: 1

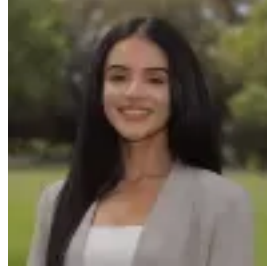
Bathrooms: 1

Parkings: 1

Type: Apartment



Steven Fan
0411885168



Nilufar ToraySafi
0478813567

Guide \$240k | Auction On-Site Sat 27th July 10am

Positioned on level 8 in a resort-style complex with sunny North aspects facing Westfield Shoppingtown, this value-packed studio apartment presents a perfect opportunity at an affordable price for first-home buyers or investors to enter the market. Situated within a short stroll to cosmopolitan Parramatta CBD, railway station, bus interchange hub, Light Rail & Sydney Metro (under construction), Westfield Shoppingtown, reputable schools, T-Way bus, sports grounds, Parramatta Park, CommBank Stadium, newly opened Parramatta Aquatic Centre, trendy restaurants, cafes, and nearby one of the largest urban renewal projects in Australia - Parramatta Square, a World-Class Civic Centre. It features: - North-facing undercover balcony- Fully-tiled bathroom with shower over bathtub- Kitchenette with electric stove- Reverse-cycle air conditioner- Built-in wardrobe- Security basement parking- Resort-style facilities include indoor swimming pool & sauna- Perfect for self-managed super funds or a solid investment with excellent returns"Ray White Parramatta Group - Parramatta | Oatlands | Northmead | Greystanes, its directors, employees and related entities believe that the information contained herein is gathered from sources we deem to be reliable. However, no representation or warranties of any nature whatsoever are given, intended or implied. Any interested parties should rely on their own inquiries."