

1507/7 Magdalene Terrace, Wollri Creek, NSW 2205



Apartment For Sale

Thursday, 11 July 2024

1507/7 Magdalene Terrace, Wollri Creek, NSW 2205

Bedrooms: 2

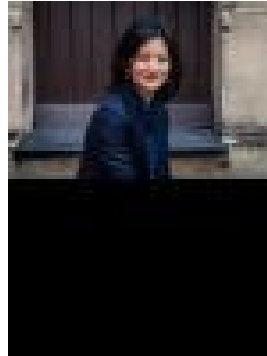
Bathrooms: 1

Parkings: 1

Type: Apartment



Dimi Kostopoulos
0474444034



Jessica Pung

\$850,000 - \$880,000

This Northwest facing 2 bedroom apartment is located on the 15th floor of Vivid Building and has parking and a storage cage in the basement parking area. Features include:

- Open plan lounge and dining
- Sleek modern kitchen with stone bench tops and Smeg appliances
- 2 spacious bedrooms with Built-in Wardrobes
- Total area 79 sqm
- Internal laundry
- Winter garden off lounge and bedroom

Currently on periodic lease returning \$820 per week. Disbursements: Council Rates approx. \$373 per quarter. Strata Levies approx. \$1,610 per quarter. Water Rates approx. \$85 per month.

- Easy access to village shops, cafés and restaurants
- Lively village atmosphere in a park side setting
- Adjacent to popular supermarkets
- Access to 4 gyms, 4 pools and barbecue areas within Discovery Point
- Short walk to the on-site Wolli Creek train station
- Only 3 stops to Central station
- Only 1 stop from Sydney Airport

Positioned in the lively retail precinct and piazza-style Village Square, 'Vivid' at 7 Magdalene Terrace Wolli Creek, blends a vibrant village atmosphere with designer apartment living. Vivid's striking architecture and elegant linear design stands tall above the Discovery Point backdrop. These beautifully appointed apartments are characterised by attention to detail in every design, from the functional kitchens to the stylish bathrooms. Interior finishes choices have been thoughtfully selected, allowing residents the freedom to design living spaces that reflect their own style. Vivid offers a vibrant community atmosphere just 10km from Sydney's CBD. Discovery Point residents enjoy all that this vibrant community has to offer including the convenience of the village square with its cafés, restaurants and specialty shops, a train station within Discovery Point and over 3 hectares of parks and gardens. *SOME OF THE IMAGES WITHIN THIS ADVERTISEMENT ARE VIRTUALLY FURNISHED