

1508/605 St Kilda Road, Melbourne, Vic 3004



Apartment For Sale

Tuesday, 25 June 2024

1508/605 St Kilda Road, Melbourne, Vic 3004

Bedrooms: 1

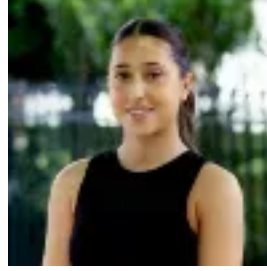
Bathrooms: 1

Parkings: 1

Type: Apartment



TommyLee Lee Davies
0381020200



Trinity Paderno
0381020200

\$475,000 - \$510,000

• Drive-In Car Space • Secure Intercom Entry • Views over Wesley College and Surrounds • Outdoor Pool, Garden, BBQ pods, Lounges, Gymnasium, Heated Spa and Sauna, Theatre, Dining and Kitchen

Introducing an exquisite one-bedroom haven with breathtaking Views. This spacious layout boasts a central living/dining area, complemented by panoramic windows to showcase the stunning scenery. Step into the sleek kitchen adorned with stone benches, integrated dishwasher, and stainless steel appliances. Luxuriate in the impressively appointed bathroom featuring high-end finishes. This apartment offers the ultimate comfort with reverse cycle heating/cooling, security entrance, lift access, and an allocated car space. Nestled amidst lush parks and gardens, this development sits at the corner of High Street and St Kilda Road, just 4km from the CBD. Surrounded by Melbourne's key landmarks, including Albert Park, Fawkner Park, and the Royal Botanical Garden, it's an address of distinction. Residents are pampered with exclusive access to a private dining room, wine bar, sunken fireplace, reading room, health club, cinema, and state-of-the-art gymnasium. Entertain with flair in the three private dining rooms or a karaoke pod. Enjoy amenities like views of Wesley College and surrounds, a resort-like outdoor pool and garden sanctuary, BBQ pods, lounges, and bathing pavilions. Stay fit with the gymnasium, heated spa, and sauna, or unwind in the private theatre. Hosting gatherings is effortless with the private dining and kitchen facilities.