

152/70 Efkarpidis Street, Gungahlin, ACT 2912

Raine&Horne

Apartment For Sale

Wednesday, 10 July 2024

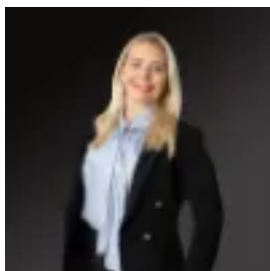
152/70 Efkarpidis Street, Gungahlin, ACT 2912

Bedrooms: 2

Bathrooms: 2

Parkings: 2

Type: Apartment



Aliza Cole
0262518289

789,000+

Unit 152 boasts a unique design, with its orientation providing extra privacy and enhanced views. This apartments feature top-tier fixtures and fittings. With a beautiful aspect taking in stunning views, an abundance of natural light, and a stand-out location - it doesn't get any better. Embrace the luxury of premium amenities mere steps away, enhancing your lifestyle with unparalleled convenience. SIERRA well known for its prime location and superior build quality. This brand new apartment has been thoughtfully designed to optimise space, light, and views. In an unpredictable market where developments can pose as non cost efficient for their clients, Glavcorp stands out by consistently delivering certainty and quality. For over 40 years, they have been dedicated to achieving excellence and providing rock-solid results every single time.

- Brand new apartment, never been lived in
- Canberra planned, Canberra designed, Canberra built
- Drone delivery enabled with a built-in Drone landing pad
- Quality Franke appliances with 5-year warranties
- NBN enabled building
- Short walk to Gungahlin's many shopping and dining options
- Within a 5 minute stroll to the light rail stop
- Easy access to the many parks and lifestyle choices Gungahlin offers
- Timber floors throughout living & kitchen areas
- Stone benchtops
- Double glazed floor to ceiling windows
- One allocated secure basement car space + storage cage

Essentials:

- Internal: 100m²
- Balcony: 39m²
- EER: 6.0
- Year built: 2024
- Level 7
- Strata levies: \$2,981.84p.a
- Rental estimate: \$630-\$650 per week
- Modern and stylish design
- Reverse cycle heating and cooling
- Franke appliances
- Pantry
- Dual access to bathroom
- Double glazed windows
- NBN enabled
- Timber flooring
- Secure parcel lockers
- Intercom entry and lift access