

16/19 Shirley Road, Wollstonecraft, NSW 2065



Apartment For Sale

Wednesday, 10 July 2024

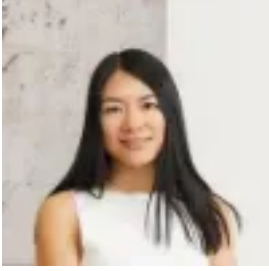
16/19 Shirley Road, Wollstonecraft, NSW 2065

Bedrooms: 1

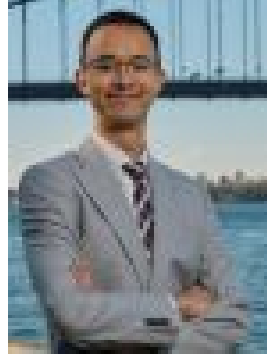
Bathrooms: 1

Parkings: 1

Type: Apartment



Victoria Liu
0411281000



Anthony Crugnale
0451316499

For Auction - Contact Agent

Nestled amid a quiet, leafy enclave just metres from Berry Island Reserve, this immaculately presented single-bedroom apartment offers a private retreat from everyday cares. Surrounded by prestigious family homes, this contemporary, well-appointed apartment is the ideal abode for those wishing to combine peace and tranquility with the convenience of having buses and trains just metres from the door. Expansive views of the city skyline and to the south west, visible from every room, add a sense of charm and grandeur to this delightful residence. The kitchen is bright, neat and clean, with aluminum appliances, electric cooktop and quality cabinetry. The large living/dining room flows from the kitchen and is bathed in natural light. The oversized double bedroom has a built-in wardrobe and an ensuite with bath. With its close proximity to green spaces, harbour foreshores and transport links, the apartment offers an enviable lifestyle of tranquility and sophistication in this exclusive Lower North Shore locale. Features- Elevated position, immaculate condition throughout- City skyline views from every room, expansive views to the south and west- Metres from Wollstonecraft Station and buses- Short stroll to Berry Island reserve and harbour foreshores- Quiet, leafy neighbourhood consisting of large family homes- Generous living/dining room flowing off the kitchen- Oversized bedroom well separated from the living area, ensuite and built-in- Bright, modern kitchen with electric cooktop, stainless steel appliances- Premium-quality carpet in living room and bedroom- Neat and clean tiled bathroom with bath