

16/68-70 Elizabeth Bay Road, Elizabeth Bay, NSW 2011

Raine&Horne.
Unlimited

Apartment For Sale

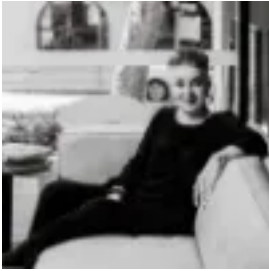
Saturday, 29 June 2024

16/68-70 Elizabeth Bay Road, Elizabeth Bay, NSW 2011

Bedrooms: 2

Bathrooms: 1

Type: Apartment



Jane Schumann
0280671000



Samuel Schumann
0280671000

AUCTION

Enjoy space, sunshine and harbour views at this elegant 98sqm (approx.) apartment on the NE side of Level 3 in The Raymond, a landmark c1929 building with gracious foyer, timber-panelled common areas and lift. An entertainer's dream featuring two adjoining living rooms with wide windows framing the views, the apartment retains classic character and high ceilings in light-filled interiors and a huge main bedroom. Designed by architect E. N. Vennard and the first block of "luxury flats" built in Elizabeth Bay, The Raymond presents an enviable bayside lifestyle just footsteps to cafes, buses and Rushcutters Bay Park. Features- 2 spacious living areas with Sydney Harbour views- Add your own touch & style- Main king-size bedroom with wall-to-wall built-ins - 2nd double bedroom, wide windows, NE aspect - Fully equipped kitchen & bathroom- Euro laundry, entry hall with storage cupboards- High ceilings, polished timber floors, wide windows- 250m to Potts Point village shopping & restaurants- Buses at door, 550m walk to Kings Cross train station- 270m to harbourside Beare Park & The Lookout cafe