

163/395 Antill Street, Watson, ACT 2602



Apartment For Sale

Wednesday, 19 June 2024

163/395 Antill Street, Watson, ACT 2602

Bedrooms: 2

Bathrooms: 2

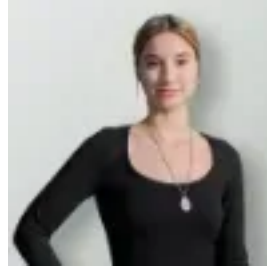
Parkings: 2

Area: 104 m2

Type: Apartment



Andrew White
0406753362



Maia Nagy
0262959911

AUCTION

Positioned at the base of Mount Majura Nature Reserve, surrounded by parklands, and with great access to quality local shops, the conveniently located 'Solstice' complex delivers that highly sought after balanced lifestyle of convenient Inner-North living in a serene and green setting. Private, secure, and set back from the street, the first floor apartment is both spacious and welcoming, with leafy outlooks and wood laminate flooring framing an expansive open plan living and dining opening out to an oversized balcony - perfect for relaxing or alfresco entertaining. Living and dining flow on to the generous kitchen, including all-electric cooking, stone benchtops, breakfast bar, double sink, dishwasher, new black floor tiles, with lots of storage throughout. The main bedroom is privately positioned, and enjoys a private outlook, large floor-to-ceiling built-in wardrobes and double vanity ensuite, with a large second bedroom also including built in robes. The main bathroom boasts floor to ceiling tiling, stone top timber vanity with above bench sink, and excellent storage, with a separate internal laundry providing additional versatility to the floorplan. Two secure basement car spaces and a large secure storage cage round out this quality apartment, ready to welcome you into this highly prized and community minded Inner- North pocket.* 2 bedrooms, 2 bathrooms and 2 secure car spaces* Large open plan living and dining, well connected to both the kitchen and large undercover balcony, perfect for alfresco entertaining* Generous all-electric kitchen with generous stone bench space, breakfast bar, double sink, dishwasher, new black floor tiles, and plentiful storage throughout* Main bedroom with built in robe and ensuite + second good sized bedroom, also with built-in robe* European style laundry with sink* Opposite Mt Majura Reserve, just a short walk to multiple nature reserves and hiking trailsHouse Size: 103 sqmEER: 6.0Strata: \$1,727pq (approx.)Rates: \$1,784pa (approx.)Land Tax: \$2,094pa (approx. if rented out)Whilst all care has been taken to ensure accuracy in the preparation of the particulars herein, no warranty can be given, and interested parties must rely on their own enquiries. This business is independently owned and operated by Belle Property Canberra. ABN 95 611 730 806 trading as Belle Property Canberra.