

19/524-542 Pacific Highway, Chatswood, NSW, 2067



Sold Apartment

Friday, 16 August 2024

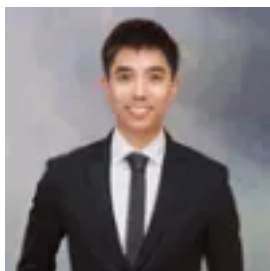
19/524-542 Pacific Highway, Chatswood, NSW, 2067

Bedrooms: 3

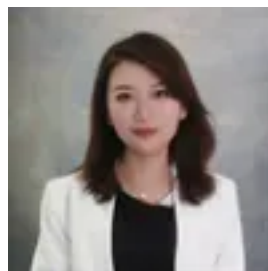
Bathrooms: 2

Parkings: 1

Type: Apartment



Ethanguang Li



Sophiahuichun Su

Contemporary lifestyle of convenience

Fresh, well-lit, and poised for contemporary living with 148SQM, the smart layout of this welcoming apartment ensures that all key rooms have access to the balcony. The thoughtful design elements extend throughout the rest of the apartment, featuring an impressive master suite, two immaculate bathrooms, and a fully integrated living area for maximum functionality. Ideally situated just moments away from Chatswood CBD, restaurants, the railway, and Chatswood Public School, this property caters to young families, first-time homebuyers, and investors alike.

Spacious open-plan living and dining areas with a centrally positioned alfresco balcony
Expansive stone-topped kitchen complete with gas cooking and a dishwasher
Bedrooms equipped with built-in robes and balcony access, master featuring a walk-in robe.
A full main bathroom, discreet laundry facilities, and air conditioning
Secure single car space, effortless lift access right to your doorstep
Within the catchment areas of Chatswood Public and Chatswood High School
Approximately a 10-minute walk to Chatswood Public and High Schools

Disclaimer:

All information contained herein is gathered from sources we deem to be reliable. However, we cannot guarantee its accuracy and interested persons should rely on their own enquiries.