

1904/594 St Kilda Road, Melbourne, Vic 3004

KAY & BURTON

Apartment For Sale

Wednesday, 26 June 2024

1904/594 St Kilda Road, Melbourne, Vic 3004

Bedrooms: 3

Bathrooms: 2

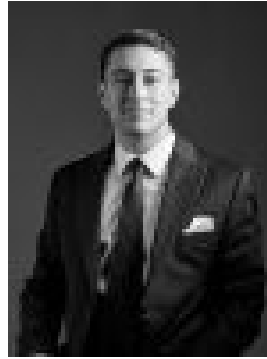
Parkings: 4

Area: 218 m2

Type: Apartment



Gary Ormrod
0419588331



Dario Fazio
0398201111

Expressions of interest close 23 July at 5pm

Offering an unparalleled level of sophistication and design with unobstructed views over Albert Park Lake, Port Phillip Bay, the You Yangs and back to the city, this penthouse is a rare opportunity for the discerning buyer. Enter the exclusive "Penthouse" foyer of the renowned Alto on The Boulevard Complex, take the express lift direct to Level 19 and be greeted with a light-filled residence measuring 218 sqm (approx). The extra wide European oak entrance hall leads to the grand living domain with a gas fireplace and unobstructed views over Albert Park Lake, the Bay and city skyline. The definition of penthouse living, this beautifully proportioned residence has full height windows capturing the glorious views. Luxury finishes of marble, stone and timber enhance the sense of grandeur and scale, further highlighting opulent living. The dining room, also boasting incredible views, is just the place to host and entertain family and guests alike. Nearby, the kitchen is resplendent in stone, top-of-the-line Miele appliances and custom-designed cabinetry. The walk-in pantry offers more storage. This penthouse features three generously-sized bedrooms, including the superb main suite that is a real sanctuary. It has balcony access with views over the Bay to the Brighton Yacht Club and the You Yangs, a walk-in wardrobe and marble finished ensuite with twin vanities, shower and separate spa bath. Two additional bedrooms with built-in robes, share a marble bathroom. The flexible floorplan also allows for the study to be fourth bedroom if required. Additional comforts include the powder room, ample additional storage cupboards, separate laundry, ducted heating and cooling, four car spaces and building facilities which include a swimming pool, gymnasium and concierge. From this distinguished address enjoy easy access to the city and arts precinct tram, St Kilda restaurants, Chapel Street shops, cafes and Prahran market, parklands and schools such as Wesley and Melbourne Grammar.