

192/416 St Kilda Road, Melbourne, Vic 3004



Apartment For Sale

Wednesday, 10 July 2024

192/416 St Kilda Road, Melbourne, Vic 3004

Bedrooms: 2

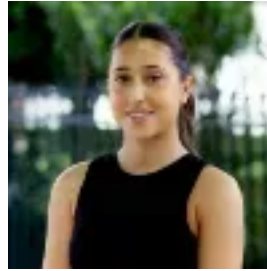
Bathrooms: 1

Parkings: 1

Type: Apartment



TommyLee Lee Davies
0381020200



Trinity Paderno
0381020200

\$650,000 - \$670,000

• 150m From Upcoming ANZAC Station • Drive-In Car Space • 250m Radius From Melbourne Grammar, The Mac.Robertson Girls' High School, Fawkner Park, Albert Park Lake, Shrine Of Remembrance & Royal Botanical Gardens • Upgraded Floor Boards

Nestled in a picturesque corner setting, this captivating two-bedroom apartment impresses with its elevated position and breathtaking views over the tree-lined St Kilda Road parkland. Located on the 19th floor of the renowned City Condos complex, this sanctuary offers easy access to city-bound trams, the upcoming Anzac Railway Station, and the lush greenery of the Royal Botanic Gardens, making it a convenient base for urban living. Inside, discover an open, airy layout flooded with natural light, accentuated by two large full-height picture windows and distinct living and dining areas. The kitchen, complete with stainless-steel appliances and a breakfast bar, invites relaxed meal times. Step outside onto the balcony framed by floor-to-ceiling sliding glass doors to soak in the stunning panorama, featuring the majestic Dandenongs and Great Dividing Range, iconic Melbourne Grammar buildings, AAMI Park, and the lush canopy of the Royal Botanic Gardens. Facing northeast, enjoy all-day natural light and breathtaking sunrises over the treetops. The apartment boasts two generously sized bedrooms with mirrored robes, serviced by a central bathroom featuring a shower-over-bath and laundry facilities including a dryer. Additional features include brand-new floorboards and carpet, secure parking, split-system heating and cooling, intercom, and exclusive access to resort-style amenities including an indoor swimming pool, tennis court, fully equipped gym, and BBQ terrace. With its prime location and array of features, this property appeals to downsizers, professionals, investors, growing families, and anyone seeking a convenient urban lifestyle.