

2/10 Valentine Grove, Armadale, Vic 3143



Apartment For Sale

Wednesday, 19 June 2024

2/10 Valentine Grove, Armadale, Vic 3143

Bedrooms: 2

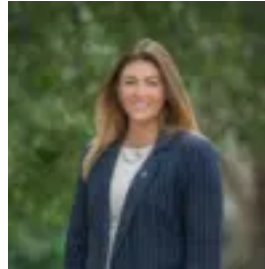
Bathrooms: 1

Parkings: 1

Type: Apartment



Will Bennison
0438572371



Gaby Carr
0398645000

Contact Agent

On the cusp of Glenferrie Road shops and cafes, Malvern Station and Malvern Central, this stylishly refurbished and oversized ground-floor gem delivers outstanding space and simplicity in a sought-after, vibrant setting. Introduced by a security entrance and well-maintained communal garden spaces, this 70s classic has an enticing leafy outlook and a refreshed vibe, revealing house-sized proportions through exceptional sun-filled spaces. Large living/dining areas flow to a private garden balcony, perfect for the BBQ, whilst a central well-equipped kitchen offers room to dine within the spacious meals area. A recently renovated, chic bathroom with a freestanding bath, terrazzo tiles and a separate WC serves two substantial bedrooms with abundant robes, set alongside an impressive laundry, offering plenty of storage space. Highlights include split system heating/cooling, intercom, hallway storage, parking for one, new carpet and engineered timber floors. Peacefully located yet positioned to capture the best of Malvern's lively lifestyle amenities, it is within a short walk to shops, cafes, restaurants, excellent schools, Malvern station and Caulfield Park.