

**2/2 Thistle Grove, Highett, VIC, 3190**

**buxton**

**Apartment For Sale**

Thursday, 17 October 2024

2/2 Thistle Grove, Highett, VIC, 3190

**Bedrooms: 2**

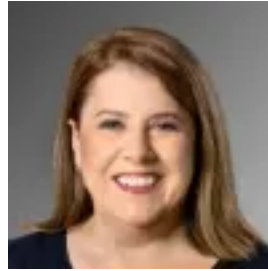
**Bathrooms: 1**

**Parkings: 1**

**Type: Apartment**



Leigh Fletcher  
0395550622



Sharon Quick  
0395550622

## **Sunlit Ground-Floor Retreat with Courtyard Charm!**

Discover the perfect blend of convenience and tranquillity in this ground-floor gem nestled within a boutique Bayside block. Located in a peaceful cul-de-sac yet just steps away from the vibrant lifestyle precinct, this sun-drenched 2-bedroom, 1.5-bathroom apartment offers the best of both worlds.

Enjoy spacious open-plan living and dining that seamlessly flows into a wide courtyard, with naturally-lit bedrooms tucked away in their own private wing. The apartment boasts modern finishes including sparkling stone benchtops, sleek wideboard-look flooring, and mirrored built-in robes. The large galley kitchen comes equipped with custom cabinetry, while the fully tiled two-way ensuite is complemented by a second WC for added convenience.

Individually climate-controlled with reverse-cycle air conditioning in every room and secured by a video intercom system, this home also features basement garage parking, a walk-in storage room, and a water tank to maintain the lush courtyard.

Tucked away just off Highett Road's shopping and café strip, you're less than 350m from the train station and surrounded by amenities, including a shortcut to the Reserve and Bowls Club. This Bayside garden apartment is a rare find in a boutique setting—your ideal retreat in the heart of it all.