

2/3 Charlton Way, Glebe, NSW 2037



Apartment For Rent

Friday, 5 July 2024

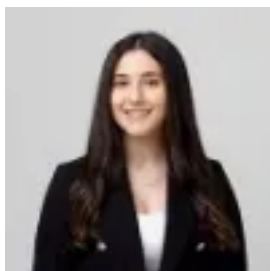
2/3 Charlton Way, Glebe, NSW 2037

Bedrooms: 3

Bathrooms: 2

Parkings: 1

Type: Apartment



Paris Kritikos
0283440000

\$1250 pw

Experience the epitome of city life in this exquisite, newly renovated three-bedroom apartment nestled in the vibrant heart of Glebe. Offering an impressive fusion of style and convenience, this inner-city haven boasts an abundance of space, top-of-the-line finishes, and an exclusive courtyard for a seamless blend of comfort and luxury. The stylish interiors are complemented by quality timber flooring throughout, providing a warm and inviting atmosphere that truly feels like home. Located just a stone's throw away from local shops, cafes, and transport, this property guarantees a lifestyle of convenience and ease.

Features:

- Three generously proportioned bedrooms, each furnished with built-in wardrobes for ample storage, including a stunning master suite with a private ensuite bathroom.
- Two pristine bathrooms featuring modern fixtures, with the convenience of an internal laundry equipped with a washing machine.
- A chic, state-of-the-art kitchen adorned with brand-new appliances; including a brand new dishwasher, and finishes; perfect for home cooks and entertainers alike.
- Exclusive courtyard, featuring low-maintenance turf, providing an urban oasis in the heart of the Inner City.
- Convenient Laundry: The apartment includes an internal laundry facility, fully equipped with a brand new washing machine.
- Secure off-street parking and a building equipped with an intercom system, ensuring your utmost safety and peace of mind.
- Conveniently located within a short walk to local amenities including Broadway Shopping Centre, Glebe Markets, Jubilee Park and Wentworth Park.
- Proximity to reputable schools such as Forest Lodge Public School and the University of Sydney. Easy transport links to the CBD, promising a hassle-free commute. Enjoy all the delights of inner-city living at 3 Charlton Way, Glebe - your next idyllic urban retreat awaits.