

**2/55 Oxlade Drive, New Farm, Qld 4005**



**Apartment For Sale**

Sunday, 23 June 2024

2/55 Oxlade Drive, New Farm, Qld 4005

**Bedrooms: 3**

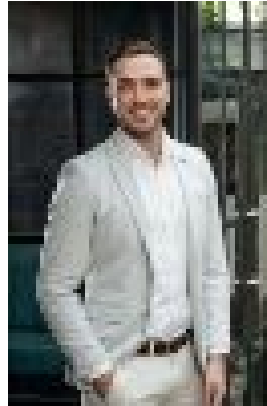
**Bathrooms: 2**

**Parkings: 2**

**Type: Apartment**



Ben Lobie  
0431567778



Daniel Anthon  
0488079549

## Auction

Auction - 16th July at 6:00PM at The Cove - 59 Doggett Street, Newstead

**THE BUILDING** An innovative masterpiece, 'Zahra' is a boutique Spyre Group development of 22 residences, meticulously executed to elevate inner-city living. 'Zahra' has been designed to include amenities such as a pool, formal lounge, caterer's kitchen, theatre, as well as a Zen Garden that overlooks the picturesque river views.

**THE RESIDENCE** Open plan lounge/dining room to relax in refined comfort. Flows to balcony with views across Oxlade Drive to the river. Balcony includes built-in seating and storage. Kitchen has Gaggenau ovens, steamer, microwave, PITT gas burners. Statuario porcelain finishes, Vintec wine fridge, butlers' pantry. Attractive bedrooms fitted out with generous built-in wardrobes. Master adjoins lavish ensuite providing deep bath, dual vanity. Sleek main bathroom, discreetly separate powder room for guests. Ducted air conditioning, fans, wide windows draw in natural light. Bespoke metal cladding with 3D façade screens enhance privacy. Secure parking for two cars.

**THE LOCATION** Oxlade Drive is just moments from New Farm Riverwalk, New Farm Park, New Farm Bowls Club, cafes, restaurants and New Farm Ferry Terminal. It is also a short trip to the James Street and Howard Smith Wharves precincts.