

20/2 Tavistock Road, Homebush West, NSW 2140



Sold Apartment

Tuesday, 3 October 2023

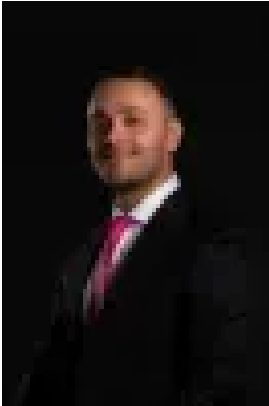
20/2 Tavistock Road, Homebush West, NSW 2140

Bedrooms: 2

Bathrooms: 2

Parkings: 2

Type: Apartment



Elie Semrani
0297632277

\$770,000

Presenting an idyllic retreat in the heart of Homebush West, this north-facing, full brick apartment offers an exquisite blend of tranquillity and convenience. Having been recently refreshed, the residence is set over a versatile tri-level layout, the apartment features modern interiors and a thoughtful design that emphasizes indoor/outdoor living. As you step inside, you're greeted by an open-plan living/dining area that seamlessly integrates with the private balcony space, creating an ideal space for entertaining or simply unwinding. The well-maintained stone kitchen is equipped with stainless steel gas appliances, catering to both casual meals and dinner parties. The apartment boasts two generously-sized carpeted bedrooms, each featuring built-in wardrobes. The master bedroom occupies the top level and opens onto a private north facing balcony, offering a serene spot to enjoy your morning coffee. Two modern bathrooms and an internal laundry add to the home's functionality. A significant highlight is the double side-by-side garage, accessible via lift, providing ample storage and secure parking. The property is part of a well-maintained boutique block, with intercom for added security. Location is key here. Situated just 550m from Flemington Station, it's just a short stroll to local markets, vibrant dining options, shops, and grocers. The beautiful Melville Reserve is just across the road, and childcare centres are nearby. Homebush Station, CBD, and popular cafes are within a 1.8km radius, making daily commuting a breeze. This unique property is perfectly positioned for those seeking a modern, easy-care lifestyle amidst everyday amenities and parks. Experience the perfect blend of modern living and nature's tranquillity right at your doorstep. Contact us today to arrange a viewing.