

202/350 Oxford Street, Bondi Junction, NSW 2022



Apartment For Rent

Friday, 29 March 2024

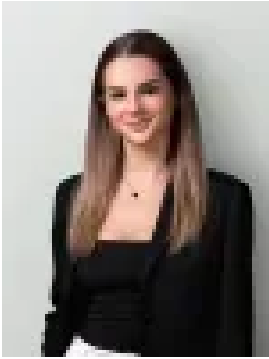
202/350 Oxford Street, Bondi Junction, NSW 2022

Bedrooms: 1

Bathrooms: 1

Area: 52 m2

Type: Apartment



Phoebe Moore
0402683775

\$825.00 per week

A collaboration between award-winning JPRA Architects and Yvette Philips, this one-bedroom apartment in the landmark new Diamond Apartments is perfectly located to enjoy a vibrant urban lifestyle with world-class dining, shopping, and entertainment at the doorstep. Sleek Scandi-inspired interiors epitomize Nordic simplicity with light and airy interiors anchored by light Oak floors and sleek stone finishes. Bondi Junction's newest architectural masterpiece is a stone's throw to Westfield and the station and features a common rooftop garden with panoramic views over the city and harbor. Being offered fully furnished with all new furnishings and ready to move immediately in, this home is the ultimate "turn-key" opportunity for the corporate single or couple who want the convenience of a lock up and go.

- Level lift access from a glamorous entry foyer with 2 lifts
- Double bedroom with built-ins, stylish designer bathroom
- Sleek open living with wall to wall windows and ducted air
- Streamlined Caesarstone gas kitchen, Miele & Samsung appliances
- Limewashed engineered Oak floors, Shadowline ceilings
- Common rooftop garden, every convenience at the doorstep
- Samsung TV included
- Easy access to the city and beaches, walk to Centennial Park