

208/280 Albert Street, East Melbourne, Vic 3002



Apartment For Sale

Sunday, 23 June 2024

208/280 Albert Street, East Melbourne, Vic 3002

Bedrooms: 1

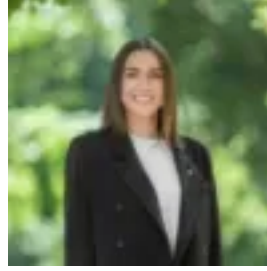
Bathrooms: 1

Parkings: 1

Type: Apartment



Peter Hannon
0394283333



Sarah Sherlock
0394283333

\$875,000 - \$950,000

Expressions of Interest Closing 16th July 2pm Achieving a brilliant balance of park tranquillity and city edge vibrancy, this sumptuous standout, set inside Bates Smart's esteemed 'The Eastbourne', offers calm and carefree splendour opposite the idyllic Fitzroy Gardens. Spanning a considerable 75sqm, this superb home enjoys distinct living and accommodation areas, with pale timber and gold accents affording an ambiance of upscale refinement. A dedicated study services today's professional, while a large, robe lined bedroom is complemented by a chic bathroom with rain shower. High end Miele appliances and stone surfaces enhance a gourmet kitchen, while an open living/dining area spills into a covered entertainer's terrace. Additional features to This magnificent home include ducted heating/cooling, ample cupboard storage, a video intercom, large laundry, dedicated parking space, and storage cage with installed shelves. With access to the Eastbourne's outstanding amenities spanning an indoor pool, spa, and steam room, yoga studio, lounge/hospitality suite, bbq area, business centre, cinema, 24-hour concierge, and 26 visitor car parks. Metres from lively Gertrude, Smith, and Brunswick Streets, trains/trams, and the storied MCG precinct. The neighbouring parkland preludes 26 hectares of the Fitzroy Gardens, Paris end of Collins Street, State Parliament precinct, and easy access to the CBD's cultural, culinary, retail, and afterhours attractions.