

210/436-442 Huntingdale Road, Mount Waverley,

Vic 3149

Apartment For Rent

Tuesday, 6 February 2024

buxton

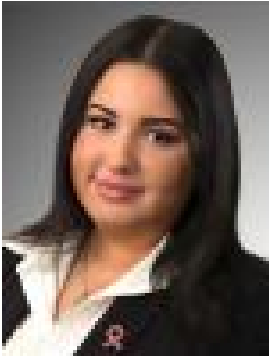
210/436-442 Huntingdale Road, Mount Waverley, Vic 3149

Bedrooms: 1

Bathrooms: 1

Parkings: 1

Type: Apartment



Emily Katiforis
0395642288

\$460 per week

One bedroom apartment conveniently located and offering space, quality and well thought out design. The finest in contemporary design and living, bedroom has BIR, modern kitchen appliances, quality fittings including stone bench tops throughout, light filled living area and European laundry, Balcony for outdoor entertainment, basement car parking for 1 car and storage cage. Entry to the complex provides ample security and peace of mind with secure coded entry and elevator access to each level. Fully landscaped gardens with communal courtyard, central to the development offers you an area of rest, and a place of peace and enjoyment. FEATURES INCLUDE: • 1 Bedroom with a built in robe • Kitchen with modern appliances • Open plan living/dining and kitchen • European laundry OTHER FEATURES INCLUDE: • Floorboards • Gas cooking • Split system in lounge/dining • Car park for 1 • Storage cage Close to Sussex Heights Primary School, Salesian College, St Mary Magdalene's School, Monash Freeway, public transport and Chadstone Shopping Centre. ***Open inspections subject to change or cancellation without notice. Please register to receive all updates*** For further inquiries please call Buxton Oakleigh 03 9564 2288. Please note photos are indicative as each apartment varies in layout. PHOTO 'ID' AND PHONE NUMBER MUST BE PROVIDED WITH ALL ENQUIRIES* Every effort has been made to ensure the accuracy of the information contained in this advertisement. The publisher, their officers, employees, representatives, contractors or related parties however, shall have no liability to any person with respect to any accuracy, inaccuracy or omission.*