

2107/486 Pacific Highway, St Leonards, NSW 2065



Apartment For Sale

Wednesday, 19 June 2024

2107/486 Pacific Highway, St Leonards, NSW 2065

Bedrooms: 2

Bathrooms: 2

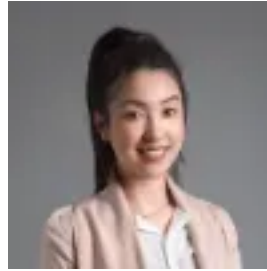
Parkings: 1

Area: 83 m2

Type: Apartment



Jeffrey Li
0298848228



Faye Dai
0298848228

Contact Agent

St Leonards Square embodies Mirvac's dedication to elegant living in Sydney, featuring top-tier amenities, convenient access to rail services, the future Crows Nest Metro, and St Leonards Shopping Plaza all conveniently within short walking distance. Home Features: - The open-plan kitchen seamlessly connects to the living/dining area, leading to a covered balcony- Stone bench tops and gas stainless steel Miele appliances- Spacious bedrooms featuring built-in closets, one of which includes its own ensuite- Sleek, fully tiled bathrooms with a modern aesthetic- Stroll to the heart of Crows Nest village eateries and nightlife There are 29 visitor spaces, 14 car share spaces, and 18 electronic car charging bays. Resident-only private amenities on Level 2 include a Music Studio, Cinema room, Function & Games Room, Meeting Rooms, Dining Room & Kitchen & and an outdoor landscaped area. Exclusive resident recreation facilities are located on Level 14 with impressive Sydney Harbour views including a spa, lap pool, steam room change rooms, yoga studio, gymnasium, and a lounge/entertaining terrace with a BBQ area.