

21702/2B Figtree Drive, Sydney Olympic Park, NSW



2127

Apartment For Sale

Wednesday, 28 February 2024

21702/2B Figtree Drive, Sydney Olympic Park, NSW 2127

Bedrooms: 3

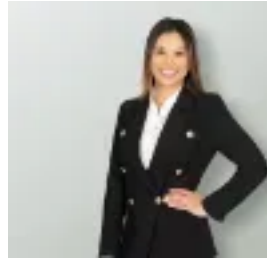
Bathrooms: 2

Parkings: 2

Type: Apartment



Simon Furnari
0411142046



Nathalie Estrella
0437115619

Auction | Contact Agent

Unveiling a modern marvel of thoughtful design, space and style, this awe-inspiring apartment located on the 17th floor showcases elevated panoramic views over Bicentennial Park, Sydney Harbour and the glistening city skyline. Effortlessly fusing sheer-scaled spaces with floor-to-ceiling glass allowing for an abundance of natural light plus state-of-the-art finishes throughout, the property ensures an effortless lifestyle opportunity within an area of demand. Olympic Park Station, cosmopolitan dining and entertainment can all be accessed within 500m.- Streamlined interiors reveal a crisp, minimal aesthetic enhanced with walls of glass- Breezy lounge/dining space enjoys an ever-changing backdrop out to the Harbour- Effortless transition between the all-season entertainers' balcony and living space- Stone kitchen enjoys waterfall benches, stainless steel gas appliances and storage- Kitchen, built-ins and storage cupboards have been modified to allow extra space- Three large bedrooms outfitted with built-ins and carpet floors, master with ensuite- Sleek bathrooms, floor-to-ceiling tiles, walk-in frameless shower, mirrored cabinets- Ducted air-conditioning, shadow line ceilings, downlights, European internal laundry- Exceptional investment opportunity within a prized location, high rental returns- Two secure car spaces/storage are located within the basement, intercom access- Walk to Sydney Showground and scenic parks, close to schooling and shopping