

22409/2B Figtree Drive, Sydney Olympic Park, NSW, Horwood Nolan.
2127

Apartment For Sale

Friday, 9 August 2024

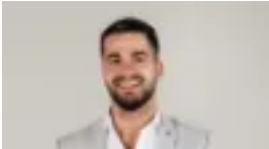
22409/2B Figtree Drive, Sydney Olympic Park, NSW, 2127

Bedrooms: 2

Bathrooms: 2

Parkings: 1

Type: Apartment



Jacob Saleh
0297436656



Ben Horwood
0297436656

Incredible Views in a High Quality Mirvac Built "Pavilions" Complex

Strata Levy: \$1,370pq

Internal: 93sqm

Storage/ Car: 16sqm

Total: 109sqm

Set to capture endless views of the city, Parramatta River, Accor Stadium and Parramatta's skyline, this 109sqm apartment offers a prestigious lifestyle in 'The Pavilions' by Mirvac, a superior development of serious quality and unmatched refinement. It's a level stroll into Olympic village shops, cafes and dining options as well as trains to the CBD and Accor stadium.

Flowing layout reveals an abundance of space
Perfect North East aspect with incredible views
Beautiful complex gardens and open workspaces
Open stone kitchen with stainless gas cooking
Large bedrooms w` built ins, main w` en-suite
Impeccable bathrooms fitted with sheer quality
Internal laundry, lift access & air conditioning
Secured undercover car space in the basement
Easy access to public transport and local shops