

2505/120 Eastern Valley Way, Belconnen, ACT 2617



Apartment For Sale

Saturday, 29 June 2024

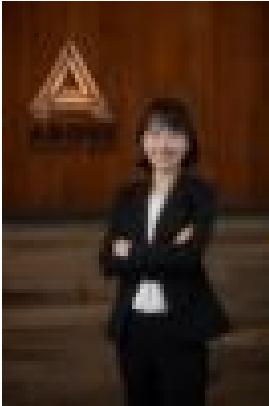
2505/120 Eastern Valley Way, Belconnen, ACT 2617

Bedrooms: 1

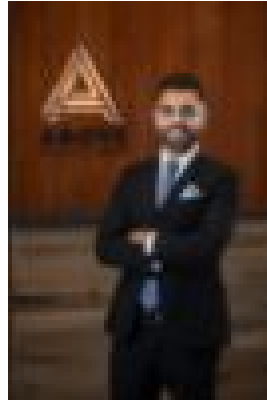
Bathrooms: 1

Parkings: 1

Type: Apartment



Joy Cui
0451140923



Radhey Arora
0421430007

\$479,900+

Situated within the renowned WAYFARER apartments in Belconnen, this remarkable one-bedroom apartment on the 25th floor offers an unparalleled living experience. With its north-facing orientation, it enjoys abundant natural light and breathtaking views of Lake Ginninderra. The apartment features a functional floorplan, complemented by high-quality SMEG appliances, floor-to-ceiling double-glazed windows, and ample storage, including a basement car space. Residents can enjoy exclusive access to a range of amenities including swimming pool and BBQ area. Located close to Canberra's inaugural mixed-use precinct, residents of this apartment enjoy unparalleled convenience with Woolworths Metro, BWS, Abode Hotel, and an array of retail, commercial, and dining options right at their doorstep. Future developments promise even more amenities for added convenience. Moreover, the apartment's proximity to Westfield, ABS, the University of Canberra, the Department of Immigration, and Calvary Hospital makes it an ideal choice for first-home buyers, owner-occupiers, and investors alike. With a potential rental income estimated at \$550 per week, this property offers both lifestyle and investment opportunities.

Apartment Features:- LED downlights- Vented dryer- Intercom access- Stone benchtops in kitchen- SMEG appliances- Reverse cycle air conditioning- Spacious balcony- Individual and secure storage cage- Residents' common area with private dining, kitchen, and lounge area- Public square and amphitheatre with access to Lake Ginninderra- Vibrant restaurant and cafe precinct- 5-minute walk to Westfield Belconnen- 5-minute drive to Calvary Private and Public Hospital- 15-minute drive to Canberra CBD- Residence: 64m²(internal), 9m²(external)- Balcony: 8m²- B/Corp approx: \$1011 pq- Rates approx: \$378pq