

29/80 Victoria Road, Marrickville, NSW 2204



Apartment For Rent

Wednesday, 3 July 2024

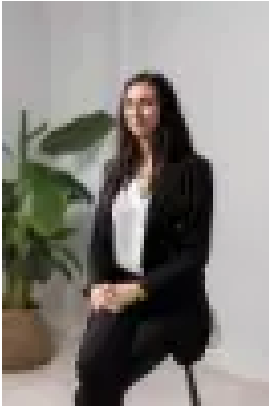
29/80 Victoria Road, Marrickville, NSW 2204

Bedrooms: 2

Bathrooms: 2

Parkings: 1

Type: Apartment



Elizabeth Celi
0295181655



Emma Karhani
0424855961

\$900 per week

"Stead House, Enmore Park"! Stunning top floor 2 bedroom apartment with period features and ensuite! This gorgeous boutique apartment is located in prestigious "Stead House", a restored , 1850's Victorian italianate residence on the corner of Leicester Street with an irresistible blend of the old and new! Featuring carpets, built-in wardrobes in both bedrooms, near new bathroom with caesar stone vanity bench top, an en-suite bathroom, a stunning "state-of-the-art" gourmet kitchen with caesar stone bench tops, stainless steel Blanco gas top and stove, stainless steel Blanco dishwasher and large, sun-filled open plan lounge/dining space facing the building's delightful verandah. The beautiful period features include high ceilings and a verandah with timber floorboards for your exclusive use, with gas outlet, perfect for that afternoon barbecue. There are also internal laundry facilities with dryer, a gas outlet for heating, security intercom to the building, undercover security parking with security access, as well as your own storage cage. If that weren't enough, you are literally metres away from Annette Kellerman Aquatic Centre, around the corner from Marrickville Metro Shopping Centre, have direct access via Victoria Road to Enmore Road, Enmore and King Street, Newtown's famed restaurant, caf? and theatre districts, as well as the University of Sydney and the CBD further along. What more could you ask for?