

306/1 Half Street, Wentworth Point, NSW 2127



Apartment For Sale

Wednesday, 19 June 2024

306/1 Half Street, Wentworth Point, NSW 2127

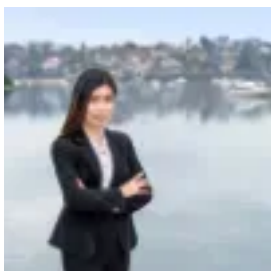
Bedrooms: 3

Bathrooms: 2

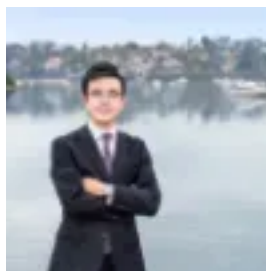
Parkings: 2

Area: 175 m2

Type: Apartment



Angell Yang
0434259336



Kalaney Che
0422273658

Just Listed! Contact Agent

Superbly positioned on a prime North facing aspect, this 175sqm total area apartment offers an abundance of size and lifestyle. A beautiful residence peacefully set within the awarded winning developer Billbergia Wentworth Point Marina project. This sun-filled home is perfectly offering leafy and private garden life with outdoor space for the kids. This building is the second stage of Billbergia Wentworth Point marinas, The Broadwater is the low density building that mixes stylish, sophisticated living with leisure and lifestyle on your doorstep. Features: - Dual expansive terraces resembling courtyards, adorned with planters and lush greenery- Contemporary open-concept design with an exceptionally spacious living/dining area that seamlessly extends to the courtyard-Spacious, north-facing bedrooms with built-in robes, offering access to the outdoor area and tranquil views of the internal garden, ensuring a private and quiet atmosphere- Floor to ceiling windows around the whole apartment and double glazed sliding doors- Cozy study space - 2 mins walk to the bus stop and marina shopping centre - 5 mins walk to the new Wentworth Point Primary school, IGA - 6 mins walk to the ferry- Walking distance to Rhodes via the Bridge - New Library and Community Centre at your neighbour - Close to Sydney Olympic Parks excellent world class sporting and recreation facilities- Low strata levy and good quality built. 144 sqm living area and 177 sqm total Don't wait to call our friendly team now for more information. Disclaimer: All information contained herein is gathered from sources we believe to be reliable; we cannot guarantee accuracy. Any interested parties should rely on their own enquiries.