

308/6A Birtley Place, Elizabeth Bay, NSW 2011



Apartment For Sale

Saturday, 29 June 2024

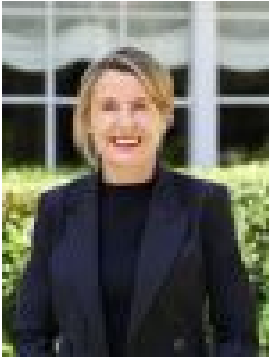
308/6A Birtley Place, Elizabeth Bay, NSW 2011

Bedrooms: 2

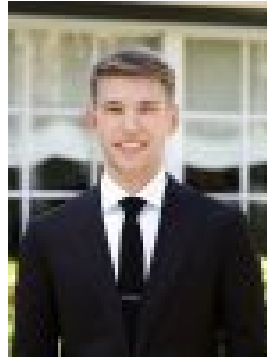
Bathrooms: 1

Area: 71 m2

Type: Apartment



Renee Cross
0413764566



Nickolas Voloshanskyi
0480320448

Auction

Make your mark on this two-bedroom apartment with a designer renovation of its original interiors on Level 3 of Baroda Hall, a modernist building tucked away at the end of quiet leafy cul-de-sac just around the corner from Fitzroy Gardens and Potts Point village. Ready for transformation of its 71sqm (approx.) layout with leafy outlooks from wide picture windows reflecting classic c1960 style, the 2-bedroom apartment features a period-style bathroom, galley kitchen and spacious living/dining area opening to the balcony. A stylishly updated foyer and a common rooftop with spectacular Sydney Harbour views to The Heads add to the appeal of this mid-century gem in a company-title building secluded amid tropical gardens at the end of a driveway with a short stroll to cafes, shopping and dining on Macleay Street. Features:• Private leafy vista from living, kitchen & balcony• Living and dining area with wide picture window• Original galley-style kitchen with electric stove• Main king-size bedroom with built-in wardrobe• 2nd double bedroom, high ceilings, timber louvres• Period bathroom with bath and separate shower• Peaceful setting at rear of Level 3 in Baroda Hall• Company title building with stylish foyer and lift• Common rooftop with breathtaking harbour views • Shared rooftop laundries and outdoor clothes lines• Visitor parking in driveway; leafy tropical gardens• 170m to weekend farmers' markets in Fitzroy Gardens• 250m to cafes, dining and shopping on Macleay Street• 250m to city buses and 500m to Kings Cross train station• 500m to harbourside Rushcutters Bay Park & Beare Park