

311/77 Galada Avenue, Parkville, Vic 3052



Apartment For Rent

Thursday, 11 July 2024

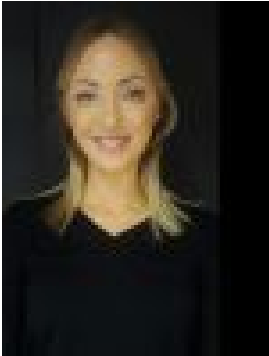
311/77 Galada Avenue, Parkville, Vic 3052

Bedrooms: 2

Bathrooms: 1

Parkings: 1

Type: Apartment



Monique Hoysted
0407791995

\$550 per week

2 Bedroom plus 1 Bathroom architect-designed apartment approximately 4km from the CBD. Combining quality materials, comfortable interior layout, and an elegant style of living which perfectly complements the abundant amenities of the surrounding area. Featuring the latest colours and finishes and a sleek contemporary feel. Moreover, every apartment enjoys efficient heating and cooling of split system air-conditioning, video intercom, car space and easy-access bike storage. For The Green residents, staying in shape is as easy as stepping out your front door – with spectacular on-site indoor and outdoor recreational facilities of The Park Club*. Relax in a landscaped luxury retreat, with views onto the adjoining Village Oval. Loosen up with laps in the indoor 25 metre swimming pool, or program a daily workout routine in the gym. Perfectly situated right next to the CBD, easy access to the city, plus all the lifestyle benefits of a local area expansive parklands. Hop on a bike, or take a leisurely stroll from your front door through the idyllic landscaping of Parkville Gardens to the lush expanses of Royal Park and Melbourne Zoo. Shop at the vibrant Queen Victoria Market. Slip across to the bustling cafés of Lygon Street. Get into the energy of student life – Melbourne University approximately 3.1km away and RMIT is handily located on the closest verge of the CBD including major Hospitals only moments away. Transport options are everywhere and as convenient as they come, providing easy access to the CBD. Bus stop right outside your front door, trains depart from nearby Royal Park or Flemington Bridge stations. Pedestrian paths in Parkville Gardens link to Royal Park tram approximately 1.2km from your apartment. Numerous bike trails connect you to a city-wide network. City Link and Melbourne's major freeways are right around the corner, with Melbourne airport a short drive away. or less than the relevant income limit for the household's composition.