

**3308/12 Philip Avenue, Broadbeach, Qld 4218**



**Apartment For Sale**

Wednesday, 10 July 2024

3308/12 Philip Avenue, Broadbeach, Qld 4218

**Bedrooms: 2**

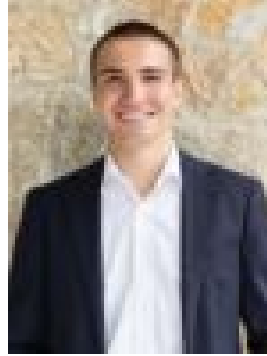
**Bathrooms: 2**

**Parkings: 1**

**Type: Apartment**



Gary Gannon  
0407994041



Ben Gannon  
0755266770

## Auction

Located on the northern side of level 33 in Signature is this spectacular and sophisticated two bedroom plus multi-purpose room Skyhome is now available. Now is your opportunity to enjoy a superb beachside lifestyle from dawn to dusk that you have longed for in a near brand-new apartment. The interior has been thoughtfully crafted and offer floor to ceiling glass windows and a neutral colour palette to maximise the natural flow of light through the apartments. This apartment features the Dusk colour scheme which includes natural grey tones mixed with satin white and timber. The perfect coastal palette. Stone bench tops and ducted air conditioning throughout come as standard adding to the sophistication and quality of this building. Offering unrivalled amenities, Signature includes Broadbeach's first ever 50m infinity edge lap pool with ample amounts of sun lounging areas including an open lawn BBQ area, exclusive residents lounge and dining area, gym, sauna, steam room, spa and movie theatre. Signature is perfectly positioned in Broadbeach. Just metres from the patrolled Kurrawa beach, parks and playgrounds, and one block south of The Oracle's award-winning restaurant precinct and Oasis shopping centre where you will find Woolworths, medical centres, newsagents, chemist, hair salons and lots more. Features:

- Currently holiday let - all furniture, kitchenware etc included in sale
- Main bedroom with ensuite and ocean views
- Second bedroom plus two way bathroom
- Open plan living with fantastic ocean views
- North East Balcony
- Multi purpose room / study / media room
- Storage cage
- Secure building with intercom
- Professional onsite management
- Infinity Edge 50m Swimming Pool
- State of the Art Gymnasium
- Exclusive Residents Lounge
- Private Dining Area
- Residents Private Theatre
- Barbecue & Teppanyaki Grill
- Outdoor Lounge & Lush Podium Lawn
- Sauna Room

Location:

- Broadbeach Surf Beach - 140m
- Kurrawa Surf Club - 300m
- Oracle Boulevard - 300m
- The Star Casino - 500m
- Pacific Fair Shopping Centre - 650m
- Isle of Capri - 3.4km
- Surfers Paradise - 4.6km
- Burleigh Heads - 7.4km
- Gold Coast Airport (OOL) - 18.2km
- Brisbane CBD - 82.5km

If you are looking for a luxury apartment in the heart of Broadbeach you must inspect now!