

**3506/45 Clarke Street, Southbank, Vic 3006**

**Apartment For Rent**

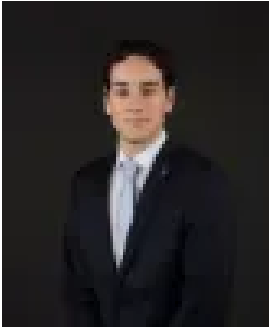
Thursday, 11 July 2024

3506/45 Clarke Street, Southbank, Vic 3006

**Bedrooms: 2**

**Bathrooms: 2**

**Type: Apartment**



Tim Bush  
0398045551



Maya Angela  
0398045551

**\$700 per week**

Modern and stylish best describes this 2-bedroom apartment. Featuring top quality fixtures and finishes, built-in robes, ensuite bathroom, Miele kitchen appliances and floor to ceiling windows that allow you to see the amazing views of the bay. Situated in the very exciting Southbank area, Platinum Tower is just minutes away from Crown Entertainment Complex, South Melbourne Market, Arts Precinct, the CBD and Melbourne's top schools. Public transportation will not be a problem as 2 tram lines operate in the area and Flinders Street Station is a short walking distance. Platinum Tower is home to the highest indoor pool in Melbourne and one of the largest vertical gardens in the world, other top class amenities include a gym, sauna, sky lounge and 24 hour concierge. Woolworths can be accessed on the ground level of the building