

401/33 East Street, Granville, NSW 2142



Apartment For Sale

Wednesday, 19 June 2024

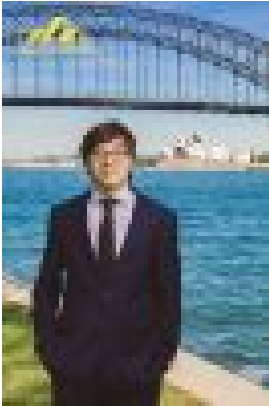
401/33 East Street, Granville, NSW 2142

Bedrooms: 2

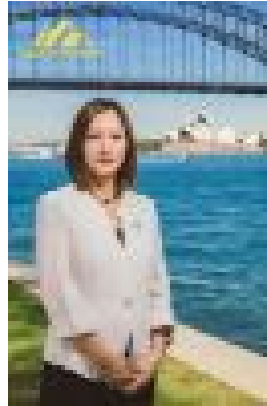
Bathrooms: 2

Parkings: 1

Type: Apartment



Bosheng Paul Zhu
0292833008



Xingyan Winnie Qian
0292833008

Contact Agent

Developed by Shokai and Built by Tier 1, multi-award-winning Parkview, this oversized apartment boasts quality finishes, elegant interiors, secure building, and basement parking. Located right next to Granville station, it leads to a relaxing and convenient lifestyle. The owner has taken very good care of the property, ensuring it includes all the extras when purchased. Key features of this apartment include:- North-facing with full sun exposure- Two good-sized bedrooms with built-in robes- Extended wardrobe in the second bedroom- Spacious open-plan living/dining area with high ceilings and ducted 2-zone air conditioning- Ample storage space- Modern bathrooms with separate laundry facility- Security building with lift access and basement parking- Storage unit in the basement with bike rack installed- Secure car space for one vehicle- Floorboards throughout, tiles in bathrooms + kitchen- LED lighting throughout- FISHER & PAYKEL appliances- Gas cooking- Water tap installed on oversized balcony- Blinds were added throughout- Experienced and proactive building manager from Delux

Location Highlights:- 1-minute walk to Granville Station- 5-minute train ride to Parramatta- 30-minute train ride to the City- Growing suburb with extensive amenities

Building Amenities:- Huge podium on level 4 with green meadow BBQ area and child facilities- Ground floor houses a 7000 sqm shopping mall with: Woolworths Metro- Asian groceries- Butcher- Restaurants

Convenience & Lifestyle:- Close to schools (Granville Public, TAFE Granville, Just for Kids Daycare)- Nearby restaurants (El Hannah, Butcher's Block, Kismet grounds, Henry's bakery etc.)- A short walk to the local Post Office, Chemist Warehouse and Granville Police Station- Shopping destinations like Costco and Olympic Park are a short drive away- 35-minute drive to Sydney CBD- 15 minutes to Flemington Market

Disclaimer: All information contained herewith, including but not limited to the general property description, price and address, is provided to Legend Property by third parties. We have obtained this information from sources we believe to be reliable; however, we cannot guarantee its accuracy. The information contained herewith should not be relied upon and you should make your own enquiries and seek advice in respect of this property or any property on this website.