

406/76 Knutsford Street, Fremantle, WA, 6160

yard

Apartment For Sale

Sunday, 8 September 2024

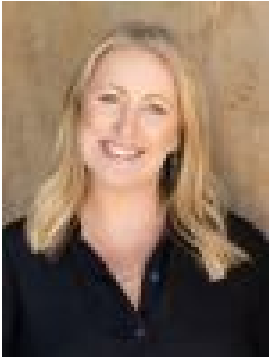
406/76 Knutsford Street, Fremantle, WA, 6160

Bedrooms: 3

Bathrooms: 2

Parkings: 2

Type: Apartment



Clare HickeyShand
0893391006

Luxury Modern Apartment Living, Sustainable and Carbon Neutral

The Fremantle spirit of connectedness, community and creativity finds new architectural form at Montreal Commons, a brand new carbon neutral apartment complex in a vibrant neighbourhood at the edge of the port city.

Designed by award winning Hillam Architects, the buildings design features are sympathetic to the natural surrounds, while recycled-look bricks have been utilised to complement the heritage component and character of the area.

Both Fremantle Golf Course and Booyembarra Park are located directly opposite your new home, creating a leafy escape from the demands of everyday living. With a lake, expansive grassed areas, pathways and an abundance of native wildlife, the park is a real local favourite, while Fremantle Skate Park provides a fun destination for kids.

A central courtyard anchors the building, providing a privacy buffer between apartments and a visual experience as occupants enter and exit their apartments.

This recently completed three bedroom, two bathroom apartment has never been lived in and sits in a prime end position on the top floor. Opening the door, walk through to the open-plan kitchen, living and dining room flowing out through floor to ceiling glass sliding doors to the paved balcony and relish in the beautiful lush outlook across the Golf Course with uninterrupted views up the fairway, over Boo park and beyond.

As the heart of your new home, the kitchen offers a warm and inviting space filled with modern convenience. Entertain with ease with your large island bench and open-plan layout or enjoy cosy nights in with a home-cooked meal. With designer tapware, quality Bosch appliances and a fabulous walk in pantry, the kitchen truly makes a statement. With energy-saving initiatives built into every aspect of the design, you can cook up a storm while saving money on your power bills.

The master bedroom features a walk-through wardrobe and private ensuite and showcasing a beautiful vista across to the golf course. Bedrooms two and three are positioned on the opposite end of the apartment offering privacy from the main bedroom. Enjoy a touch of luxury in the bathrooms, with statement matt gold tapware, premium vanities and feature lighting providing an opulent space to relax.

A choice of communal outdoor living spaces provide areas to sit and unwind with a book or utilise the BBQ area with lounge and dining facilities. Secure basement parking offers two side by size car bays, with lift access straight to your floor.

With the recently opened Montreal Local café /small bar on ground floor and the George Street precinct and Fremantle central just minutes away, you will love the convenience of the many social and culinary options on offer nearby.

This beautifully appointed apartment benefits from clever architectural design that ensures plenty of natural light and cross ventilation. Combined with quality double glazing this helps reduce your reliance on air conditioning and creates a comfortable living space all year round.

Great design, an excellent location and a very friendly neighbourly atmosphere makes this exquisite, brand new apartment feel like home.

For further details please contact Exclusive Selling Agent Clare Hickey-Shand from Yard Property on 0424 593 136.

3 Bed 2 Bath 2 Car 217sqm

Top floor apartment with sweeping views across Fremantle golf course

Brand new, never been lived in!
Designed by award winning HILLAM Architects
One of the first carbon neutral apartment buildings in Australia
Open plan kitchen, living and dining
Stylish kitchen with ample cabinetry & quality appliances and tapware
Integrated fridge/ freezer, wine fridge
Large walk in pantry
Engineered timber floors
R/C ducted air-conditioning
Internal store room; study nook
Secure side by side parking for 2 vehicles
Laundry with combination washer/dryer
Intercom system for guest entry
Walk to restaurants, cafes, parks and the centre of Fremantle
Brilliant location: walking, dining, shopping, sports
In catchment to East Fremantle Primary and John Curtin College of the Arts

100m to Fremantle Gold Course
450m to Booyeembara Park
900m to Monument Hill
1.3k Royal Fremantle Golf Club
1.4km to George Street
1.8km to Fremantle Town Hall
2.1km to Swan River
2.6km to South Terrace South Freo Café Strip
2.8km to Fremantle Train Station
3.3k Fremantle Sailing Club
3.7km to Port Beach

DISCLAIMER: This information is provided for general information purposes only and is based on information provided by third parties and may be subject to change. No warranty or representation is made as to its accuracy and interested parties should place no reliance on it and should make their own independent enquiries.