

**426/24-32 Koorine Street, Ermington, NSW 2115**



**Apartment For Rent**

Monday, 1 July 2024

426/24-32 Koorine Street, Ermington, NSW 2115

**Bedrooms: 2**

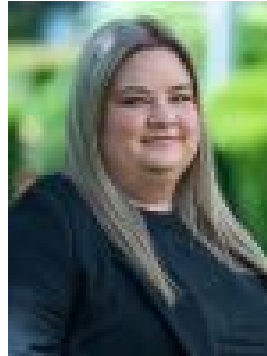
**Bathrooms: 2**

**Parkings: 2**

**Type: Apartment**



Zarin Hossain  
1300858221



Nevena Petrovic  
1300858221

**\$780 per week**

Located in the urban hub of Royal Shores, Sirius offers lifestyle apartment living within the masterplanned community in Ermington. Perched on the waters edge, Sirius offers easy access to the river, cycleway and parks. Apartment features:- Reverse cycle air conditioning & video intercom- Stone bench tops- Wool blend carpets, efficient LED down lights- Data/TV points in living and main bedroom- Recessed mirrored cabinets in bathroom- Study nook- Two car spaces & storage cage

NEIGHBORHOOD FACILITIES- Woolworths, Liquorland, Bakery 900m away- Local bus routes (523, 524, 525 600m-1.5km away)- West Ryde Railway station 4.2kms away- Rydalmere Ferry Wharf 1.2 km away- Sydney Olympic Park 8.2kms away- George Kendell Park 500m away- Childcare 750m away- Cycle tracks connect surrounding area and parks- Scenic walkways connecting to Homebush\*\*Photos in this advertisement are for illustrative purposes & are indicative only of the property.\*\*