

5/187 Pacific Highway, Lindfield, NSW 2070

STONE

Apartment For Sale

Thursday, 18 April 2024

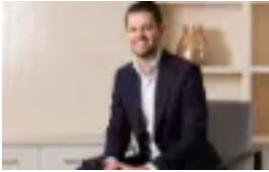
5/187 Pacific Highway, Lindfield, NSW 2070

Bedrooms: 2

Bathrooms: 1

Parkings: 1

Type: Apartment



Matt Payne
0290953500



Andrew Braid
0404979597

Auction Guide: \$850,000

Positioned away from the highway, bathed in north sunlight, this exceptionally spacious double brick strata apartment presents 124sqm approx. on title with excellent move in ready comfort and opportunity to renovate in the future. Offered for the first time since 1988, proving outstanding liveability, here the combination of the expansive single level layout and walk to rail convenience will make an ideal first home or investment for those with a clever eye for potential. Double brick strata security apartment set away from the highway- Natural light on two sides through large windows, separate living + sleeping- Large open plan living and dining, high ceilings, flow to the sunny balcony- Updated kitchen with a gas cooktop, oven, and grill, plus a dishwasher- Two bedrooms, b.i. robes to master, ceiling fans, leafy outlook to garden- Bathroom in coastal tones, vanity storage, natural ventilation, internal laundry- Large, covered balcony drenched in north sunshine, great for relaxation- Lock up garage with auto door, reverse air con, gaspoint, fans, intercom- Level stroll to Roseville rail (600m), one stop to Chatswood, direct to City- Walk to Lindfield shops and village green, in popular LLV K-12 catchment