

**502/51 Galada Avenue, Parkville, Vic 3052**



**Apartment For Rent**

Tuesday, 25 June 2024

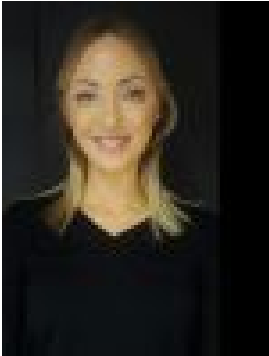
502/51 Galada Avenue, Parkville, Vic 3052

**Bedrooms: 1**

**Bathrooms: 1**

**Parkings: 1**

**Type: Apartment**



Monique Hoysted  
0407791995

**\$450 per week**

One bedroom + study area with generously proportioned living area. Apartments at Flourish feature open-plan living areas, private balconies and floor-to-ceiling glass sliders enhancing open space and providing flexible indoor-outdoor living. All apartments include a car space and access to secure communal bicycle storage. Each apartment provides residents with functional contemporary design, premium appointments and spacious open-plan living areas. Discover an enviable residential location only approximately 4km from Melbourne's CBD in a pristine, leafy environment where the best of inner city living is close at hand. Flourish Parkside is conveniently located with world-class universities, sporting venues, and arts and entertainment facilities nearby. As part of Parkville Gardens, Flourish Parkside has a stunning landscaped connection to Royal Park, Melbourne's largest green space. The Capital City Cycle Trail runs through Royal Park giving you access to Melbourne Zoo, Melbourne Aquarium, Docklands, Southbank, Federation Square and Melbourne Crown Casino. Residents also enjoy access to the exclusive "Park Club" which features a 25m indoor lap pool, gymnasium, and stunning outdoor barbeque area with residents' retreat area. Direct 505 bus route to Melbourne University at your doorstep, trains are just a short walk away right in the heart of picturesque Royal Park, or Flemington Bridge Station and easy access to city link & Melbourne airport. Please note: Enter Galada Avenue from Cade Way.