

515/626 Heidelberg Road, Alphington, Vic 3078



Apartment For Sale

Thursday, 15 February 2024

515/626 Heidelberg Road, Alphington, Vic 3078

Bedrooms: 2

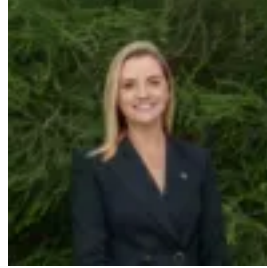
Bathrooms: 2

Parkings: 1

Type: Apartment



Grace Purchase
0427397880



Paula Beavis
0394039300

\$730,000 - \$800,000

Designer excellence comes to the fore in this two bedroom two bathroom apartment boasting uninterrupted city views and easy access to Yarra parklands. Designed with an eye on quality, this streamlined property invites you to experience sun-drenched open plan living where extensive double glazing extends to a full-width entertainer's balcony where 180 degree panoramic views sweep across striking city skyline. Modern with a sophisticated colour palette the stylish kitchen features stone counters, soft close cabinetry, Baumatic appliances including fully integrated dishwasher, making it as functional as it is stylish. Double bedrooms with robes each enjoy their own fully tiled designer bathroom, master with a luxury ensuite and views of the city, while extras including Oak floors, secure entry, lift access, heating/cooling, car space and storage cage, moments to Fairfield, Ivanhoe Village and Kew shopping precincts, and transport, together with a Sunset Lounge, communal dining and kitchen domains ideal for entertaining, gym and pool, make this a lifestyle opportunity not to be missed.