

602/2 Newquay Promenade, Docklands, Vic 3008

Apartment For Sale

Sunday, 23 June 2024



602/2 Newquay Promenade, Docklands, Vic 3008

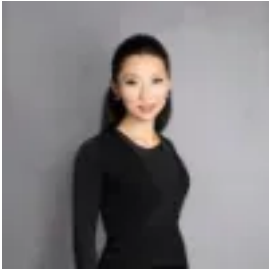
Bedrooms: 2

Bathrooms: 2

Parkings: 2

Area: 117 m2

Type: Apartment



Faye Wang

0390779775

\$900,000 - \$950,000

Imagine waking up to the tranquil views of Victoria Harbour every day. This stunning and welcoming two-bedroom, two-bathroom, two-car space, one storage cage apartment offers you the perfect waterfront lifestyle! The Conder, the fifth residential tower at NewQuay and comprising 200 apartments, sits proudly at the head of the NewQuay Promenade. Named after the renowned Australian artist Charles Conder, the Conder forms a point of contrast to the earlier stages in its architectural presentation and style. The curved shape and predominant glass façade of the building has been designed to maximise the views from the apartments to Victoria Harbour, the Bay and the city. The four level podium and 16 level tower feature a range of individual apartments and sizes, the curved nature of the design allowing each apartment to be slightly different. Residents' facilities, including an indoor pool and gym, are provided on the landscaped podium roof. The ground floor continues the vibrant 24 hour city NewQuay theme with a range of exciting restaurants and retail outlets facing onto the harbour.

Key Features:

- Situated in the prestigious Conder residential complex
- Onsite Building Manager
- Elegant, brand new timber flooring
- Spacious living and dining area, framed by full windows showcasing breathtaking water views
- Undercover balcony perfect for enjoying the harbour views and fresh air
- Contemporary kitchen with stone and timber finishes, stainless steel appliances, and an exceptional cooking experience
- Luxurious master bedroom with stylish ensuite, large built-in robe
- Direct balcony access from the master bedroom
- Second bedroom with built-in robe storage
- Modern central bathroom with all the conveniences you need, including a bathtub
- European laundry
- Ducted heating and cooling for year-round comfort
- Two secure basement car spaces
- Additional storage cage

Property Size:

- Internal: 117sqm
- External: 20.46sqm
- Total: 137.46sqm

Exclusive Amenities: Residents of Conder enjoy access to onsite building manager, a swimming pool, steam room, gymnasium, rooftop garden, and BBQ area.

Prime Location: This prime location offers everything you need at your doorstep. Close to The District Docklands with Hoyts Cinemas, Woolworths, Dan Murphy's, Chemist Warehouse, and a wide range of specialty shops & restaurants. Enjoy nearby Capital City Trail, Docklands Primary School, Marvel Stadium, top universities, trams including the free City Circle line, Southern Cross Station, and a short walk to Port Phillip Ferries. Don't miss out on this unparalleled waterside living experience. Schedule a viewing today and envision your new life at 602/2 Newquay Promenade. This apartment is more than just a home; it's a lifestyle. Make an offer now and secure your own slice of waterfront paradise!

Note: All information provided on the website, including internal and external property areas (floor size, address, and general property description), has been supplied to L Real Estate by third parties. Buyers are encouraged to conduct due diligence before purchasing a property.