

603/15 Bowes Street, Phillip, ACT 2606

ARCHER

Apartment For Sale

Monday, 8 July 2024

603/15 Bowes Street, Phillip, ACT 2606

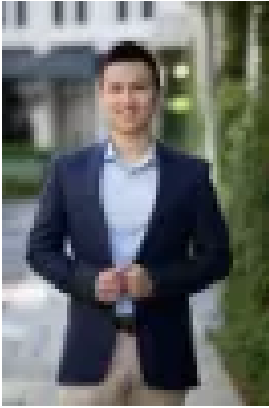
Bedrooms: 2

Bathrooms: 2

Parkings: 1

Area: 90 m2

Type: Apartment



Alex Wang

0262625232

\$575,000+

Nestled perfectly within the Grand Central building, this stunning home offers unparalleled lifestyle and convenience. Just a short stroll away from Westfield Woden, Canberra Hospital, CIT School, excellent public transportation options, and the bustling Woden Town Centre with its diverse range of shops, restaurants, and vibrant nightlife right at your doorstep. Perched on the 6th floor, this sun-drenched apartment boasts breathtaking views. The spacious and well-designed floor plan features separate and open-plan living and dining areas with floor-to-ceiling double glazed windows and sliding doors leading to a generously sized balcony, overlooking a beautiful swimming pool that enhances the resort-like ambiance. Both bedrooms are generously proportioned with built-in robes. The architecturally designed open-plan kitchen is appointed with top-of-the-line SMEG appliances, intelligent space-saving storage, and elegant finishes throughout. The complex offers an array of fantastic features, including a stunning swimming pool, a fully equipped gym, BBQ facilities, a rooftop garden, and a residents lounge and bar room. This home is a rare opportunity for downsizers, first home buyers, and investors! Contact us for more information and to schedule your appointment today!

Features:

- Beautiful view, above the swimming pool with a resort-style life style
- Bright with natural sun lights
- Floor to ceiling double glaze windows and sliding doors
- Open plan living and dining area
- Stone bench top
- Smeg appliances
- LED Down-light
- Push door and soft close draws
- Built-in Robe in each bedroom
- R/C Air conditioner
- Swimming pool, gym and cardio room, resident lounge, Bar lounge, rooftop retreat, BBQ facility
- Ultra-convenient location near Westfield Woden, Canberra Hospital, CIT School and public transportation

Particulars (all approx.)

Year Built: 2021
Living Size: 82 m² + Balcony Size: 8 m²
Total: 90 m²
Body Coperate : \$1,459 per quarter
Rental Estimate: \$600/week
EER: 5.5

DISCLAIMER We have obtained all information provided here from sources we believe to be reliable; however, we cannot guarantee its accuracy. Prospective purchasers are advised to carry out their own investigations and satisfy themselves of all aspects of such information including without limitation, any income, rentals, dimensions, areas, zoning and permits. Any figures and information contained in this advertisement are approximate and a guide only and should not be relied upon for financial purposes or taken as advice of any nature. Individuals, Self-Managed Super Funds, companies, anyone or entity, should make their own inquires and seek their own advice and rely only upon those inquiries and advice. Archer does not guarantee the accuracy of the information above and are not financial advisers or accountants and do not provide any of the above information as advice of any nature.