

705/225 Pacific Highway, North Sydney, NSW 2060



Apartment For Sale

Saturday, 29 June 2024

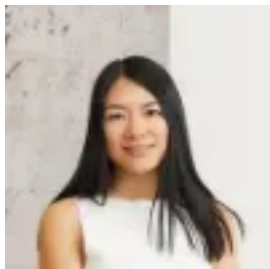
705/225 Pacific Highway, North Sydney, NSW 2060

Bedrooms: 2

Bathrooms: 2

Parkings: 1

Type: Apartment



Victoria Liu
0411281000

For Auction Guide - Contact Agent

With a stunning scenic outlook across the district and water view, this architectural sanctuary resides in the 'Lucent' development which offers a resort-like lifestyle in the heart of North Sydney. Lucent was developed by Greenland Australia, together with an award-winning team namely Builder Richard Crookes Constructions, Architecture Turner Studio and Landscaping Turf Design Studio. Property Features:- Exquisite interiors with open plan living design showcase floor-to-ceiling glass, which flows onto a covered entertainer balcony.- Sleek kitchen design equipped with Miele kitchen appliances.- Quality engineered timber flooring to living and dining areas.- Contemporary ensuite bathroom with built-in bathtub to master bedroom.- Bedrooms with built-in robes.- Ducted air-conditioner, NBN connection and intercom system.- Ample of built-in storage and internal laundry facility.- Single car space and storage room located in secure underground car park. Resort Style Facilities:- 25m infinity pool, a gym, open air kitchen/barbecue area, recreation room and rooftop garden.- Secure building with concierge and lift access to apartment, facilities and parking. Strategic Location:- Conveniently situated in the heart of North Sydney, steps to rail, and the upcoming metro.- Cafes at doorstep, stroll to local restaurants and bars, local private & public schools, North Sydney Oval, Greenwood Plaza and St Leonards Park- For inspections we recommend parking on Angelo Street Outgoings Per Quarter (All approx.): Strata \$1,750 Council \$305 Water \$178 plus usage