

7080/17 Amalfi Drive, Wentworth Point, NSW 2127 **RayWhite**

Apartment For Sale

Tuesday, 2 July 2024

7080/17 Amalfi Drive, Wentworth Point, NSW 2127

Bedrooms: 2

Bathrooms: 2

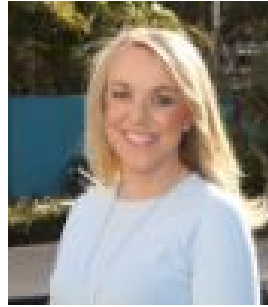
Parkings: 1

Area: 120 m2

Type: Apartment



Jeremy Deviesseux
0296489974



Rebecca Deviesseux
0296489974

Contact agent for details

Discover the serene ambiance of Wentworth Point and the unparalleled convenience of resort-style living in this stunning courtyard apartment, located in the prestigious Jesolo building of The Waterfront Estate's "One". Designed by an award-winning architect, this residence boasts cutting-edge features and exclusive rooftop BBQ amenities. Step inside to experience a home that offers space, light, and luxury, with features including:

- **Pristine Condition:** Meticulously maintained, as-new apartment.
- **Outdoor Living:** Huge 30sqm courtyard with direct external access to podium level gardens.
- **Spacious Bedrooms:** Two large bedrooms with fitted-out wardrobes, and balcony access.
- **Master Suite:** The oversized includes a luxurious ensuite and walk-in robes.
- **Open Living Area:** Expansive open-plan living and dining space.
- **Ample Storage:** Numerous storage cupboards throughout.
- **Ultra-Modern Kitchen:** Featuring stone benches, ample pantry and cupboard space, premium BOSCH appliances, gas cooktop, and dishwasher.
- **Luxurious Main Bathroom:** Tiled to the ceiling, with frameless shower screens and elegant gold accents.
- **Generous Balcony:** Offers a leafy outlook with uninterrupted district views.
- **Modern Amenities:** Dual split system air-conditioning, LED downlights, home automation technology with a smart home tablet control, and integrated ceiling speakers.
- **Convenient Laundry:** Internal laundry closet.
- **Secure Parking:** Includes a secure car space and storage cage.
- **Exclusive Rooftop Access:** Enjoy the rooftop Sky Park with Skybridge, offering stunning panoramic views from the city skyline to the mountains.
- **Club ONE Membership:** Access communal dining, lounge, kitchen area, pool table, and games room-perfect for hosting events.
- **Pulse Resort Style Amenities:** Enjoy indoor and outdoor swimming pools, tennis courts, gym, and more.

Situated just minutes from the waterfront promenade, 'The Piazza' cafes and restaurants, local parklands, bike and walking tracks, and Marina Square Shopping Centre. Plus, benefit from proximity to the Sydney Olympic Park dining, entertainment, and sporting precincts. This property is an excellent opportunity for both investors seeking great rental yields and home occupiers desiring an exceptional resort lifestyle. We look forward to welcoming you to the inspections.