

# 7203/2 Cullen Close, Forest Lodge, NSW 2037

## Apartment For Sale

Tuesday, 25 June 2024

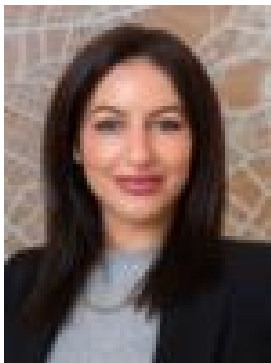
7203/2 Cullen Close, Forest Lodge, NSW 2037

**Bedrooms: 1**

**Bathrooms: 1**

**Area: 62 m2**

**Type: Apartment**



Emma Symonds

## Buyers Guide \$800,000

Discover the perfect blend of style and convenience in this 62sqm in total, chic one-bedroom apartment located in the prestigious Maestro building, Harold Park. Just 2.5 km from Sydney's CBD, this unit offers an ideal urban lifestyle with easy access to public transport, lush parklands, and the dynamic Tramsheds retail precinct. Designed with comfort and sophistication in mind, this apartment includes a generous 10sqm balcony overlooking beautiful internal gardens, providing a serene retreat in the heart of the city. • Bright, open-plan living and dining area with plenty of natural light. • Cozy bedroom with plush carpet and built-in wardrobe. • Modern kitchen featuring sleek reconstituted stone benchtops. • High-end Miele kitchen appliances for a premium cooking experience. • Spacious bathroom with contemporary finishes and fixtures. • Generous 10sqm balcony with views of the internal gardens. • Prime location near CBD, light rail, and Tramsheds retail precinct. • Sustainable design with a 6-star thermal rating for energy efficiency. • Dedicated visitor parking with convenient intercom access. This property is currently leased until October 2024 for \$720.00 per week. Mirvac developments are designed with exceptional environmental and social performance in mind, reflecting our pledge to deliver projects that meet the highest sustainability standards. Mirvac buildings are designed and constructed to meet the requirements of BASIX, the Residential Flat Design Code, and Mirvac's own standards for apartments. Council \$295.10 approx. Water \$178.42 approx. Strata \$797.50 approx.