

8/1 Morley St, Sutherland, NSW, 2232

ABODE

Apartment For Sale

Tuesday, 6 August 2024

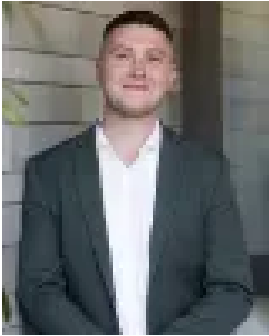
8/1 Morley St, Sutherland, NSW, 2232

Bedrooms: 2

Bathrooms: 1

Parkings: 1

Type: Apartment



Braith Wilson
0295318855

PRIVATE TOP FLOOR APARTMENT - NATIONAL PARK OUTLOOK

Occupying a leafy outlook with views over the National Park, perched on the top floor of a well maintained secure building, this spacious two bedroom apartment is an exceptional offering. Boasting an open plan design, generous kitchen, substantial wrap around balcony and single car garaging located within the secure basement.

- > open plan living area provides a versatile space for relaxation and entertaining, filled with natural light
- > two spacious bedrooms, master bedroom features a built in robe
- > modern kitchen offers substantial bench space and storage
- > sleek bathroom offers a separate bath and shower. Spacious internal laundry with additional toilet
- > expansive wrap around balcony off the living area
- > single car garage located within the secure basement garage
- > located in a quiet yet convenient cul-de-sac, in close proximity to transport, cafes, restaurants and the National Park

Strata \$989 pq approx.

Council \$367.50 pq approx.

Water \$172.79 pq approx.

For more information or to arrange a private inspection contact Suzanne Hibberd 0414 344 222 or Braith Wilson 0401 186 756