

**8/4-8 Bridge Road, Glebe, NSW 2037**

**Apartment For Rent**

Tuesday, 25 June 2024

8/4-8 Bridge Road, Glebe, NSW 2037

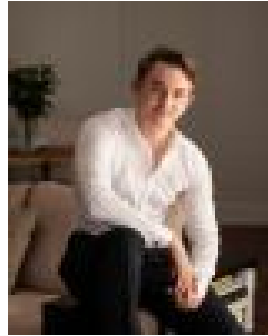
**Bedrooms: 1**

**Bathrooms: 1**

**Type: Apartment**



Elliot Martin  
0429970297



Julian Iacopetta  
0450736825

**\$770 per week**

Impeccably crafted, showcasing contemporary light filled interiors with luxury finishes throughout, this north west facing harbour front apartment makes an immediate impact with their spectacular vantage point across Blackwattle Bay to the iconic Anzac Bridge. The Property: \* Large bedroom with sliding frosted glass walls and built in robes \* Spacious open plan living and dining layout leading to covered loggia style balcony\* Some with expansive views of the Anzac Bridge and over Blackwattle Bay\* Gourmet galley style kitchen with gas cooking, stone benches, integrated microwave\* Luxurious bathroom with frameless glass shower and combined internal laundry\* Ducted air-conditioning throughout\* Security complex with video intercom\* Huge common rooftop terrace with epic water, Anzac Bridge and city backdrop\* 500 metres to Wentworth Park Light Rail Station

The Details: \* Available 19/07/2024\* 12 Month Lease term

The Neighbourhood: Bohemian and funky by nature, Glebe's rich architectural makeup is the backbone of this historic neighbourhood. Stories of hardship, love, endurance and vitality have made this inner-west suburb into an alluring village that has a thriving arts and culture scene, and a line-up of cafés and restaurants that demand attention. (Source - sitchu.com.au) Lucas Garcia | 0427 374 072 Raine&Horne Newtownrh.com.au/newtown | 8596 3555