

8/43-47 Morphett Road, Camden Park, SA, 5038

NOAKES
NICKOLAS

Apartment For Sale

Saturday, 10 August 2024

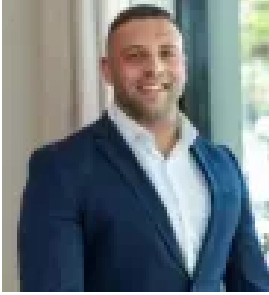
8/43-47 Morphett Road, Camden Park, SA, 5038

Bedrooms: 2

Bathrooms: 1

Parkings: 1

Type: Apartment



Jorden Tresidder
0881663989

Carefree living in Camden Park.

Best Offers By Monday 26th August at 1pm (Unless Sold Prior).

Quietly set within the peaceful suburb of Camden Park yet just moments from the mecca of Glenelg, this immaculate two-bedroom unit is poised to provide a low-maintenance home or carefree investment.

Occupying prime position toward the rear of a quiet group of ten, this home unlocks the perfect chance to start up, invest or downsize, just down the road from one of Adelaide's most thriving strips of coastline.

Light-filled living welcomes to the reinvigorated interior footprint, taking on a desirable open plan layout to incorporate a tidy kitchen with gas all-in-one cooker.

Just down the hall, two carpeted bedrooms are headlined by a spacious master boasting built-in robes, central to a compact main bathroom and internal laundry facilities.

Entirely easy-care so you can get out and explore the cafés and restaurants in your back pocket, the outdoor courtyard offers a private place to soak up the sun and sip your morning coffee, complete with a shade sail and fuss-free patch of artificial lawn.

Just footsteps to both bus and tram stops facilitating an easy city to coast connection, whilst local shopping amenities, reserves and prized schooling are all even closer you have everything at your fingertips to unlock a fulfilling and easy-going lifestyle in Camden Park.

Even more to love:

- Undercover carport
- Split system R/C air conditioning
- Roller shutters
- Garden shed
- Zoned for Plympton International College
- Footsteps to Immanuel College & Morphett Road tram stop
- Just 15-minutes from the CBD
- Quick dash to Glenelg, Westfield Marion, Flinders University & Hospital

Year Built: 1971

Title: Strata

Council: City of West Torrens

Council Rates: \$925PA

SA Water: \$165PQ

ES Levy: \$189.65PA

Strata Levies: \$400PQ

Disclaimer: all information provided has been obtained from sources we believe to be accurate, however, we cannot guarantee the information is accurate and we accept no liability for any errors or omissions. If this property is to be sold via auction the Vendors Statement may be inspected at Level 1, 67 Anzac Highway, Ashford for 3 consecutive business days and at the property for 30 minutes prior to the auction commencing. RLA 315571.