

80/212 Mona Vale Road, St Ives, NSW 2075



Apartment For Rent

Wednesday, 10 July 2024

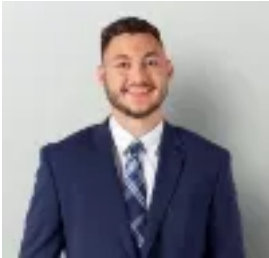
80/212 Mona Vale Road, St Ives, NSW 2075

Bedrooms: 1

Bathrooms: 1

Parkings: 1

Type: Apartment



Alex Nindra
0290568600

\$620 per week

Discover your new home in the boutique 'Rosedale' block. This spacious one bedroom apartment boasts a well-designed floorplan, tucked away from the bustle of Mona Vale Road. Features:-Bright, airy living spaces with air conditioning-Large bedroom with floor-to-ceiling built-in wardrobes and mirrored sliding doors-Modern bathroom-Sleek kitchen featuring stone benchtops, gas cooking, stainless steel appliances, and a dishwasher Prime Location-Within the sought-after St Ives North Public School zone-Convenient public transport to Gordon and the City right at your doorstep-Surrounded by a variety of restaurants and cafes-A short walk to Shopping Village, Pymble Golf Club, and St Ives Bowling Club Additional Features-Internal laundry tucked away for convenience-Large, sun-filled open-plan living area-Private balcony with serene tree-lined views-Communal gardens with a BBQ entertaining area-Secure underground parking with lift access-To view, please use the public car park adjacent to the apartment block. The apartment is located in Block B.