

907/52 Park St, South Melbourne, VIC, 3205

FLETCHERS

Apartment For Sale

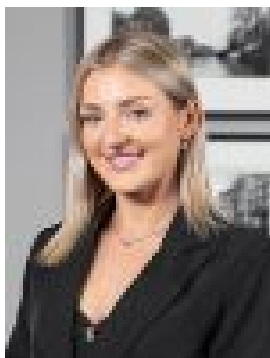
Tuesday, 3 September 2024

907/52 Park St, South Melbourne, VIC, 3205

Bedrooms: 1

Bathrooms: 1

Type: Apartment



Shea Lamont
0450540143



Milan Kinda
0439821044

Not just a home, It's a lifestyle in one of Melbourne's most coveted locations!

Welcome to Park Street, South Melbourne – where modern urban living blends seamlessly with serene luxury. This exceptional apartment offers unparalleled convenience, located directly in front of a tram stop for effortless city access and just a short stroll from the Royal Botanic Gardens and the renowned National Gallery of Victoria (NGV).

Located just a heartbeat away from Melbourne's bustling central business district, this residence places you in the heart of a vibrant community while ensuring a swift and easy commute.

Step outside and immerse yourself in the dynamic energy of South Melbourne. The iconic South Melbourne Market is nearby, inviting you to explore its array of fresh produce, gourmet treats, and unique shops. For those who enjoy dining out and entertainment, the Crown Entertainment Complex and Southbank Promenade are within easy reach, offering a wealth of options to suit any taste.

Inside is an open-plan design, abundant natural light, and high-quality finishes. The modern kitchen and spacious living area extend seamlessly to a private balcony, creating an inviting space perfect for both relaxing and entertaining. Enjoy year-round comfort with efficient air conditioning throughout the unit.

The building itself features outstanding amenities, including a well-equipped gym, a relaxing pool, and secure parking, catering to all aspects of your lifestyle. Relax in the large common lounge area, perfect for social gatherings or unwinding, or entertain guests on the rooftop BBQ and entertainment area, offering stunning views and a perfect setting for outdoor dining.

For culture lovers, the National Gallery of Victoria is just a short walk away, while the Royal Botanic Gardens provide a beautiful, serene escape with picturesque landscapes and tranquil walking trails.

This apartment isn't just a home; it's a lifestyle of sophistication, convenience, and serenity in one of Melbourne's most coveted locations.

Schedule a viewing today and experience the best that city living has to offer!

Terms: 10% deposit, balance 30/45/60/90/120/Negotiable days