

94/88 James Ruse Drive, Rosehill, NSW 2142



Apartment For Sale

Thursday, 4 July 2024

94/88 James Ruse Drive, Rosehill, NSW 2142

Bedrooms: 2

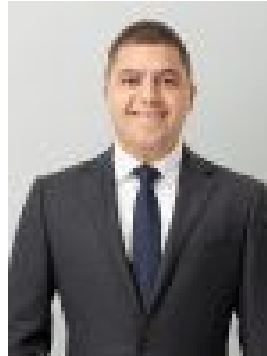
Bathrooms: 2

Parkings: 1

Type: Apartment



John Dahdah
0296355000



Christopher Sahyoun
0296355000

Contact Agent

Sought-after and exciting investment opportunities don't get much better than this dual-key Rosehill property offering exceptional returns. Public transportation, shops and amenities are close by and you're just minutes from the Parramatta CBD.- Prized dual-key, dual-tenancy investment in Rosehill- Bolster your portfolio with impressive rental returns- Ground floor with 1 bed, 1 bath and open-plan living- A 1-bed, 1-bath first floor with a kitchenette- Air-con, a balcony, garage parking and storage- Modern finishes and a low-maintenance design- Walk to bus stops and Harris Park train station- So close to cafes, shops, parks, restaurants and the M4- Located just minutes from the bustling Parramatta CBD