

**A310/4 Herman Crescent, Rouse Hill, NSW 2155**



**Apartment For Sale**

Sunday, 23 June 2024

A310/4 Herman Crescent, Rouse Hill, NSW 2155

**Bedrooms: 2**

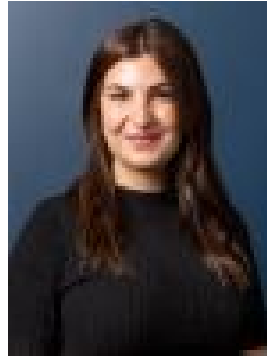
**Bathrooms: 2**

**Parkings: 1**

**Type: Apartment**



Shad McMillan  
0288829922



Loren Khamu  
0288829922

## Just Listed

This immaculate and light-filled apartment is beautifully appointed and is conveniently located just a stone's throw from Tallawong Metro and upcoming Town Centre. The stylish apartment offers a spacious and private floorplan that is flooded with natural light. Accommodation consists of 2 well positioned and well separated bedrooms with built-ins. The spacious master comes complete with private ensuite. The second bedroom is serviced by another well-appointed family size bathroom. Both bedrooms have sliding door access to the well-lit balcony. The open plan living area offers plenty of space for a lounge and dining area and offers sliding door access to your expansive balcony, perfect to enjoy your morning coffee or to entertain family and friends. The central kitchen is well positioned overlooking the living areas and comes complete with Caesar stone bench tops, stainless-steel appliances including a gas cooktop and dishwasher as well as plenty of cupboard space. Adding further value to the apartment are features such as split system air conditioning, all gas appliances, storage cage, secure carpark access to your car space and visitors parking plus secure foyer entry all with video intercom. You could not possibly find a better location! Nestled right in the ever-growing hub of Rouse Hill, you are just minutes' walk to Tallawong Metro and the future Tallawong Town Centre as well as Rouse Hill Anglican College, and upcoming Tallawong Primary School. Also the Rouse Hill Town Centre, upcoming Rouse Hill Hospital and sporting parks are all within easy reach.