

A501/40 Loftus Cres, Homebush, NSW, 2140



Sold Apartment

Thursday, 22 August 2024

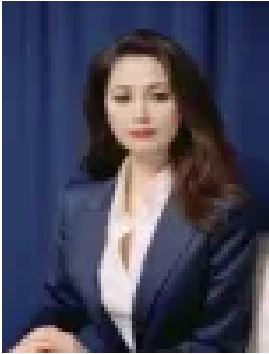
A501/40 Loftus Cres, Homebush, NSW, 2140

Bedrooms: 2

Bathrooms: 2

Parkings: 2

Type: Apartment



Vanessa Kim
0297632277

SPACIOUS LIFESTYLE APARTMENT OF PRIVACY, CONVENIENCE

Discover an exclusive world of unrivalled lifestyle at the "Jewel of Homebush." This designer, luxury apartment offers peaceful suburban living in the heart of Sydney's Inner West. Whether you're looking for some laidback, nature time or to immerse yourself in shopping malls and local cafes, this building is the perfect address for you with unrivalled access to educational facilities and transportation.

Refined elegance that showcases a stunning leafy sunny East Aspect, the property showcases massive balconies which will elevate the way you interpret apartment living and all of its surroundings.

Features Include:

- Two generous bedrooms with built-ins
- Smart, modern, luxury bathroom with ensuite to master
- Oversized, light-filled living area leading to large entertainers' balcony with a sunny East & North aspect
- Gas cooking, stone benchtops and Smeg stainless steel appliances
- Internal laundry, abundance of storage
- Boutique security block, ducted air-conditioning
- Two security car space and several storages cage on title
- Walking distance to Homebush Train Station, Homebush Public School and café's/eateries.

Offering timeless luxury, "The Crown" is the perfect dwelling for an upscale living experience for all members of the family.

Well-crafted residences, surrounded by spectacular views and the convenience of life in Homebush.

Strata levy: \$1080.60p/q

Water rate: \$247.23p/q

Council rate:\$400p/q

Total size: 165sqm, Internal: 76sqm, balcony 29sqm, Car spaces: 26sqm, Storages 34sqm