

AG02/37 Loftus Crescent, Homebush, NSW, 2140



Sold Apartment

Thursday, 22 August 2024

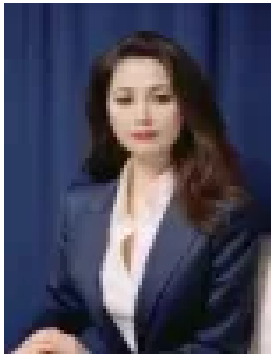
AG02/37 Loftus Crescent, Homebush, NSW, 2140

Bedrooms: 2

Bathrooms: 2

Parkings: 1

Type: Apartment



Vanessa Kim
0297632277

145sqm of Timeless Elegance with Courtyard

Nestled within the coveted Homebush community, this apartment with a north-facing orientation boasts distinctive architectural elements, lush landscaping, and a premium standard of quality that sets it apart from the ordinary. The open-plan living spaces seamlessly extend through expansive floor-to-ceiling glass doors onto a spacious courtyard and balcony, creating a private outdoor haven for entertainment.

Indoors, revel in the sophisticated charm of top-tier finishes presented in neutral tones. Modern fixtures and ducted air conditioning further enhance the appeal.

Crafted by esteemed developers, meticulous attention to detail and a dedication to craftsmanship are evident across every facet of this development.

Key features include:

- Bright open-plan space designed for entertaining
- Fully integrated kitchen with stone countertops, gas cooktop, and a breakfast island overlooking a tranquil view
- Ample master bedroom with a mirrored built-in wardrobe
- Ensuite featuring floor-to-ceiling tiles and a semi-frameless glass shower
- Natural timber style strong tile flooring
- Abundant natural light through floor-to-ceiling glass doors
- Secure parking for one vehicle and a generously sized storage cage
- Proximity to Homebush and Flemington Station, providing convenient transportation
- Close to a variety of restaurants, cafes, and supermarkets

Strata levy: \$790.66p/q

Water rate: \$260.48p/q

Council rate: \$400.69p/q

Total size: 145sqm, Internal + balcony + courtyard 129sqm, Car space + storage 16sqm